

Trimble AutoBid Sheetmetal

Combining advanced technology and years of sheet metal experience, Trimble® AutoBid® Sheetmetal is the fastest, most accurate estimating software for sheet metal contractors. Using input tools such as GTCO Digitizers and Smart Menus®, contractors can quickly and accurately create bids.

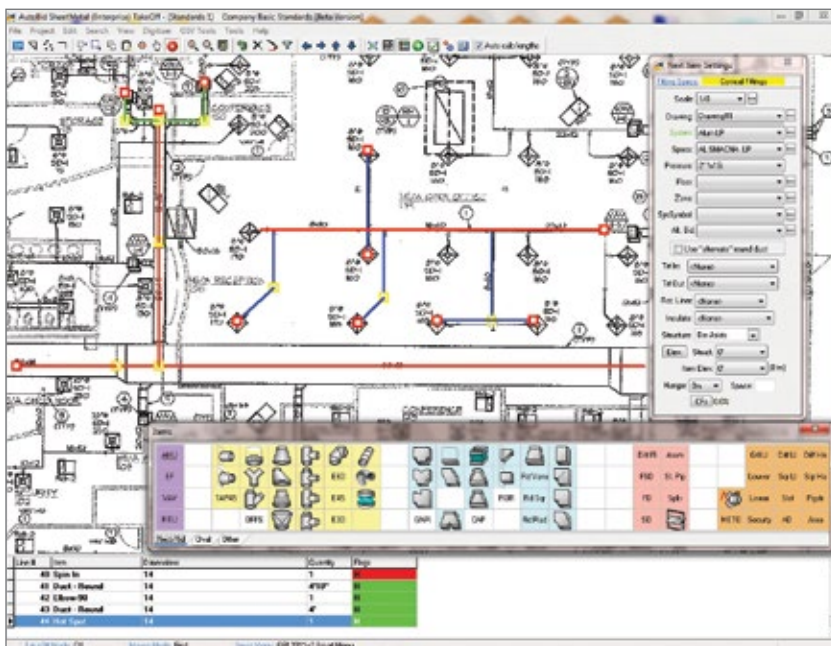
Increase Your Competitive Edge

Specification-driven take offs speed up the process by applying specs that automatically determine the properties of that item including the material type, metal gauge, and allowances of the items being taken off. Users need only worry about entering the item name and quantity and the associated specification provides the details.

Trimble AutoBid SheetMetal generates all fittings, including branch takeoffs, based on the relationship between points that are touched with either a digitizer or a mouse during the takeoff. By eliminating the need to place each fitting our product greatly reduces takeoff time.

On-Screen View of Take-Off

OnScreen View of TakeOff allows customers to skip the digitizer. Imported drawings are taken off on screen with the click of a mouse. While tracing take off, a corresponding visual audit trail is created.



Key Features:

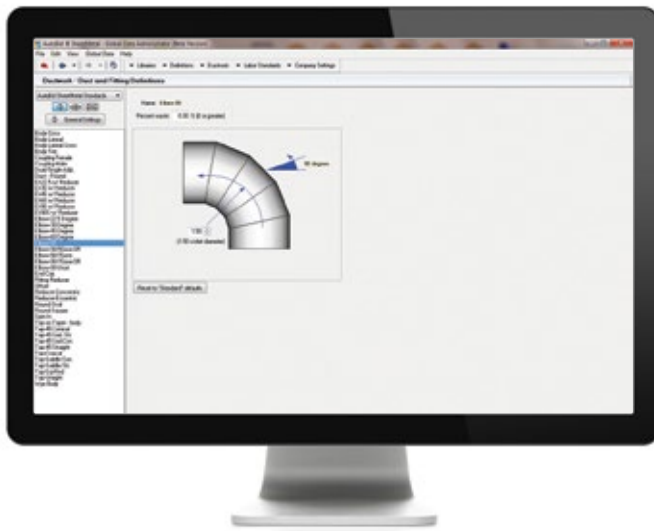
- ▶ **Shape Conversion Tool:** Rectangular ducts can be converted to equivalent round duct sizes. Contractors save time and money by generating a new price for round ductwork without having to reline a drawing and repeat the takeoff.
- ▶ **Offset Generation:** Users can quickly generate offsets in their takeoff by changing item elevations up or down 1 foot with a single mouse click, speeding up takeoffs by four times faster than past methods.
- ▶ **Conceptual estimates:** AutoBid lets contractors quickly generate conceptual estimates by using OnScreen View of TakeOff & assemblies, complete with equipment placed and hookups and mains sketched in.
- ▶ **Custom Exports:** Create a custom export of material cost, labor hours, and labor cost, by different categories. This export can then be directly imported into accounting or project scheduling.
- ▶ **Rapid Reports:** Excel®-based bid reports which allow users to summarize or report their data in a variety of configurations. Rapid Reports can also be used as a Final Bid Sheet – productivity rates, crew mix, and equipment quotes can all be easily entered. Easily customized to meet user reporting needs.
- ▶ **Vulcan Cutting Software Integration:** With AutoBid's integration with Vulcan users can import jobs from Vulcan to price change orders or they can export fabrication information to the Vulcan Cutting Software.
- ▶ **DuctDesigner 3D Integration:** For contractors wishing to verify the price of as-built conditions vs. engineer's drawings, AutoBid SheetMetal allows imports from Duct Designer 3D.

To further speed things up, areas of the on screen drawing can also be boxed in and copied to repeat takeoff items such as a common VAV box hook-up or rooftop unit.

Change happens; Trimble AutoBid SheetMetal can highlight the differences between two similar drawings. By seeing the changes in the drawings, estimators can quickly determine where their takeoff needs to be changed.

Importing, Exporting & Reporting

Trimble AutoBid SheetMetal follows the workflow of the sheet metal contractor integrating with a variety of 3rd party applications. Whether contractors are looking to export to an accounting or scheduling program, generate your final bid summary, import jobs from your CAM software, export for fabrication information, or verify as-built conditions vs. engineer's drawings Trimble AutoBid SheetMetal's integration speeds the estimating and job costing process.



With Trimble AutoBid Sheetmetal shape conversion tool contractors can convert rectangular ducts to equivalent round duct sizes for alternate bids.

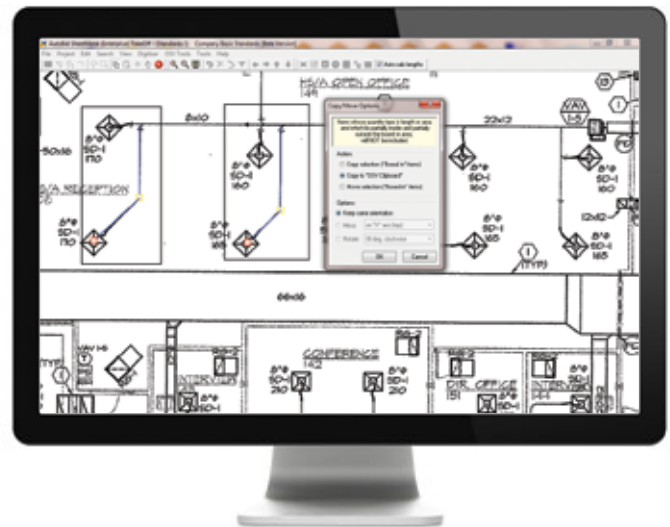
Contractors can speed their takeoff even more with the Copy/Move options to easily repeat common items.

System Requirements

WORKSTATION:

- ▶ **Processor:** 2.8GHz Intel Compatible Processor
- ▶ **RAM:** 4GB RAM or higher
- ▶ **Storage:** 20 GB free disk space
- ▶ **Operating system:** Windows® 8 Professional or Windows 7 Professional
- ▶ **Monitor:** Dual 23-inch Monitors; 1280 X 1024 resolution

Specifications subject to change without notice.



TRIMBLE MEP

116 Inverness Drive East, Suite 210
Englewood, CO 80112
1-800-234-3758
mep.trimble.com

© 2016, Trimble Inc. All rights reserved. Trimble and the Triangle & Globe logo are trademarks of Trimble Inc., registered in the United States and other countries. Microsoft, Windows, and Excel are either registered trademarks or trademarks of Microsoft Corporation in the United States and/or other countries. All other trademarks are the property of their respective owners. PN 022519-152 (10/16)