

EC-CAD

Computer Aided Design Software

The EC-CAD software is designed for the mechanical, plumbing, piping and HVAC contractor looking to have actionable manufacturer data in their 3D models . Designed to accommodate manufacturer content within AutoCAD® MEP, EC-CAD is a simple-to-learn solution that offers seamless project coordination, increased productivity, and true-to-life fabrication accuracy right out of the box.

Detailed Manufacturer Content

EC-CAD provides syncing with an up-to-date catalog of manufacturer content and parts, ensuring you're using the same parts in your designs that will be used in fabrication. You have access to everything you need with easy filtering, the creation and use of custom fittings, rule and formula-based specifications, and other shop standards.

Precision Editing Tools

EC-CAD's precision tools allow you to select the details of real manufacturer parts direction within software dialogs, property and tool palettes, and grips editing commands. With editing commands tailored to sheet metal and mechanical design and fully compatible with AutoCAD MEP commands, you've got an integrated solution that builds automation into as many operations as possible, from auto-tagging and auto-connecting to automatic spool dimensioning.

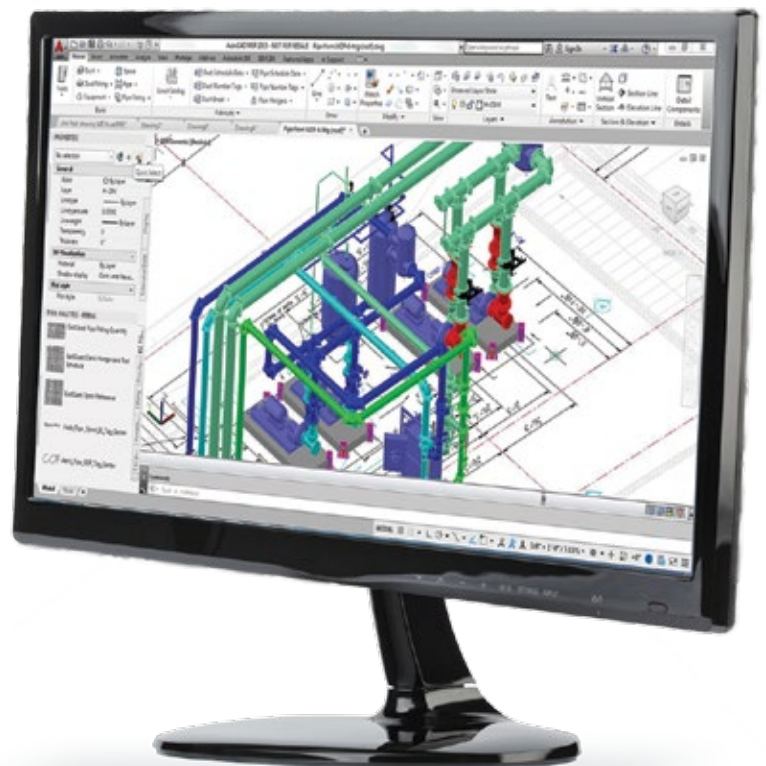
More than a 3D Model

Your 3D model is only as good as the information contained within them, EC-CAD's fabrication and spooling feature translates your 3D model to fabricatable drawings for you, your shop or your fabricator. When you are ready to lay out your field points in on the jobsite EC-CAD features the ability to add layout points to your hangers to export to Trimble Field Link.

Additionally, you can add EC MEP Design to Fabrication which gives contractors and engineers the ability to create detailed layouts from Autodesk Revit engineering designs, avoiding hours of time-consuming and expensive redrawing. Offering increased efficiency and cost-effectiveness, the design layouts produced by this automated software are ready for coordination, fabrication, and installation in applications including sheet metal, piping, and plumbing.

Benefits:

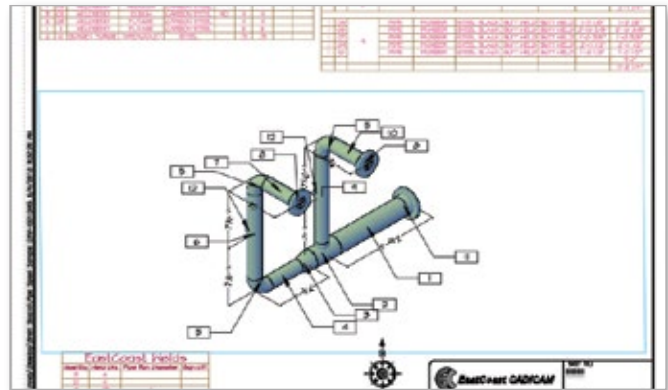
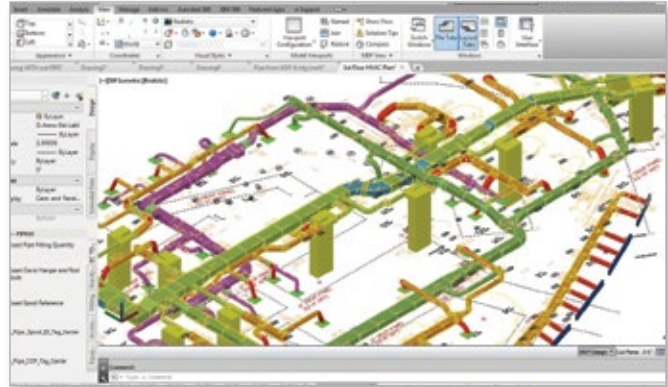
- ▶ Take advantage of key AutoCAD MEP tools including routing options
- ▶ Custom hanger routine allows for easy addition of hangers to your drawings
- ▶ Up-to-date manufacturer data for accurate and actionable models



System Requirements

WORKSTATION:

- ▶ **Processor:** 2.8GHz Intel® Core™ i7 compatible processor with Hyper-Threading
- ▶ **RAM:** 8GB RAM or higher
- ▶ **Storage:** 2.3 GB free disk space for installation
- ▶ **Operating System:** Windows® 8 Professional 64-bit or Windows® 7 Professional 64-bit
- ▶ **Video Card:** Autodesk® - certified graphics hardware
- ▶ **Monitor:** 1280 X 1024 resolution true color



TRIMBLE MEP
116 Inverness Drive East, Suite 210
Englewood, CO 80112
1-800-234-3758
mep.trimble.com

© 2016, Trimble Inc. All rights reserved. Trimble and the Triangle & Globe logo are trademarks of Trimble Inc., registered in the United States and other countries. All other trademarks are the property of their respective owners.