

RELEASE NOTES

TRIMBLE ACCUBID CLASSIC 14

This document provides basic information about new features, enhancements, and modifications in **version 14 of the Trimble® Accubid® Classic software**. More detailed information can be found in the online help system.

These Release Notes cover the following topics:

- ▶ **Introduction**
- ▶ **New Features, Enhancements, and Modifications**
- ▶ **Essential release information**
- ▶ **Update installation instructions**
- ▶ **Product assistance**
- ▶ **Legal Notices**

Introduction

These Release Notes describe the new features and modifications that are new in version 14 of the Trimble® Accubid® Classic software. For further support information, go to <http://mep.trimble.com/support>

What you receive with version 14

- New/Modified features as outlined in this document
- Updated online help
- Electronic documentation available on the installation media and the Trimble Client Portal

Upgrade Procedure

Please refer to the [Update Installation Instructions](#) at the end of this document for information on requirements to install this update. Trimble recommends that you print these instructions to help ensure proper operation of the software application after installation.

Note – *In the installation routine, selecting the Update database option installs only program modifications and enhancements. Your existing tables, specifications, and estimates are not impacted in any way.*



Compatibility

Operating Systems

This version of the Trimble Accubid Classic software is compatible with Microsoft Windows® 10 and Windows 7 (32-bit and 64-bit)

Note – *Windows 7 Home Edition, Windows 8.x, or Windows 10 S are not supported.*

For a complete listing of System Requirements/Technical Specifications, please go to the Trimble MEP website:

<http://mep.trimble.com/products/estimating/trimble-accubid-classic-estimating/trimble-accubid-classic-estimating-system-requirements>

Trimble Accubid LiveCount

This release of the Classic software is compatible with the Trimble Accubid LiveCount® software, release 5.0 or higher.

Trimble Time and Material Billing

The Trimble Work Management software is now integrated into the Trimble Time & Material Billing application. The Time & Material Billing program provides intelligent scheduling tools for those companies with a mobile workforce.

Note – *If you are upgrading from a Time & Material Billing version prior to 12.5, please contact MEP Client Services at 1-800-361-3030 or accubidsupport@trimble.com before proceeding.*

Trimble Intuit QuickBooks

The Time & Material Billing software includes an integration with the Intuit QuickBooks® application. This integration is compatible with QuickBooks versions 2012 and later.

Tip – *While the integration may work with earlier versions of the QuickBooks application, Trimble recommends that you upgrade to the most recent release to take full advantage of all features in the software applications.*



New Features, Enhancements, and Modifications

Better integration with Features and Functions of LiveCount Cloud

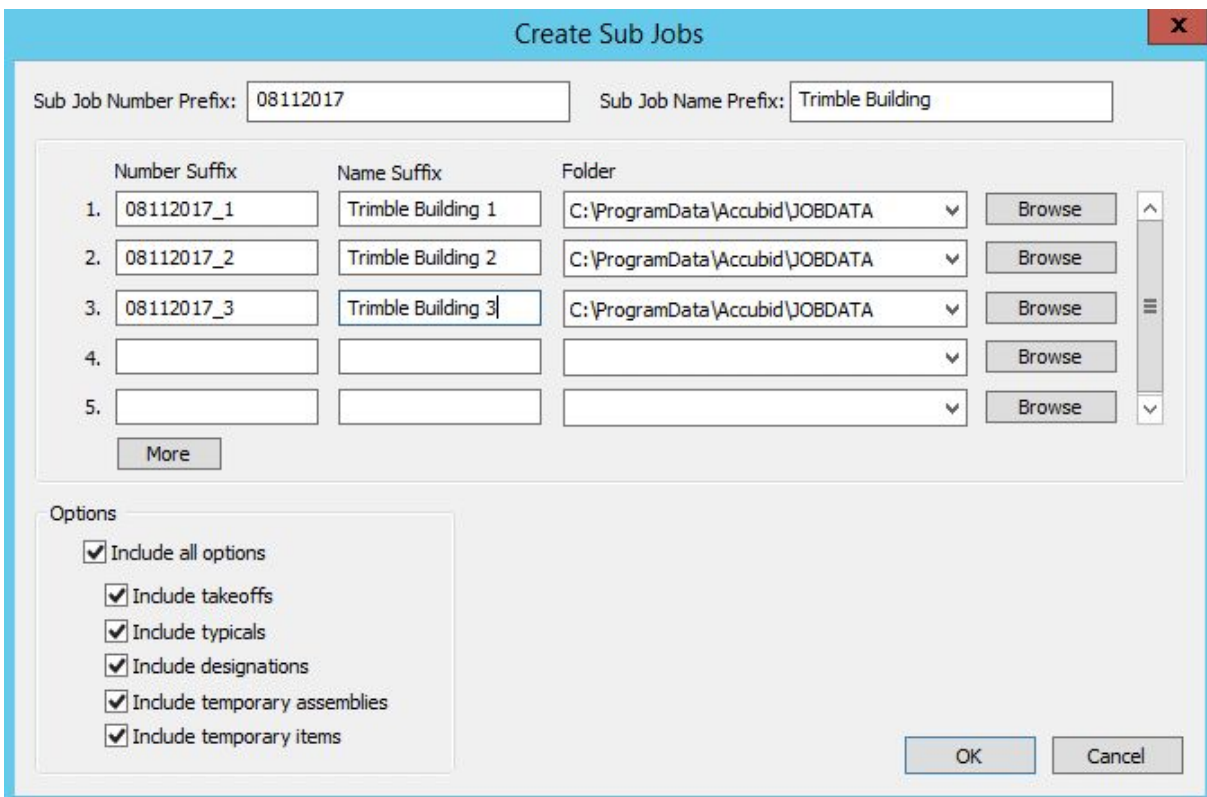
If a job in Accubid Classic version 14 gets connected to a job in LiveCount Cloud, users will see fundamental improvements in the way Accubid and the LiveCount client interact and how the data flows between the two products.

Better handling of Master Jobs and Sub Jobs

When using sub jobs connected to a master job in Accubid Classic so multiple estimators collaborate on an estimate, all drawings and measurements of the different sub jobs are now accessible from a single job in LiveCount Cloud, which is directly related to the master job in Accubid Classic version 14.

Applying a sub job filter for a certain sub job in LiveCount Cloud will allow the estimator to see and edit only the measurements for this sub job.

Renaming master jobs and sub jobs will update the job name in LiveCount Cloud once the job is re-opened in Accubid and the connection to LiveCount Cloud is re-established.

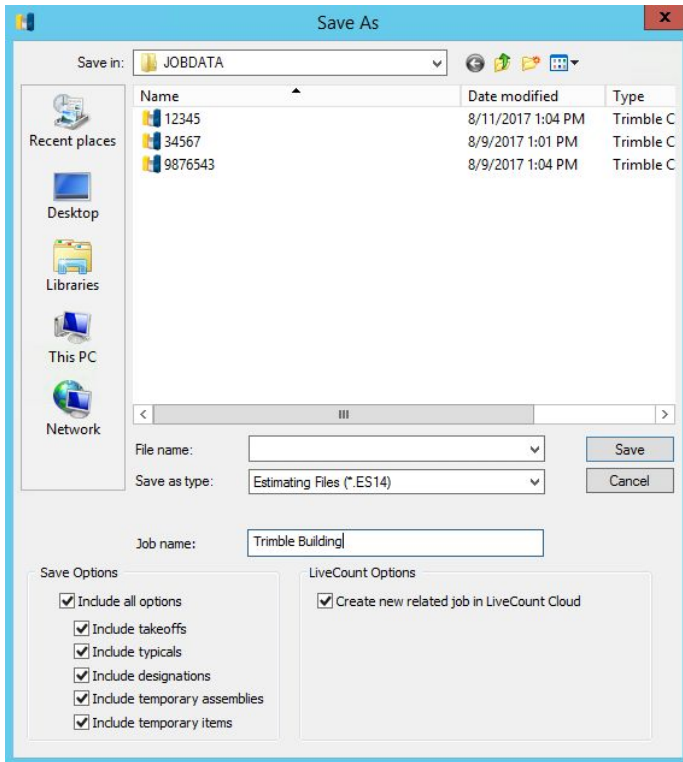


Improvements to the “Save Job As” function

When using the Save Job As function in Accubid Classic on a job that is connected to LiveCount Cloud a new option called Create new related job in Live Count Cloud is available. Checking this option allows you to duplicate the job including all drawings and existing take-offs in LiveCount Cloud.

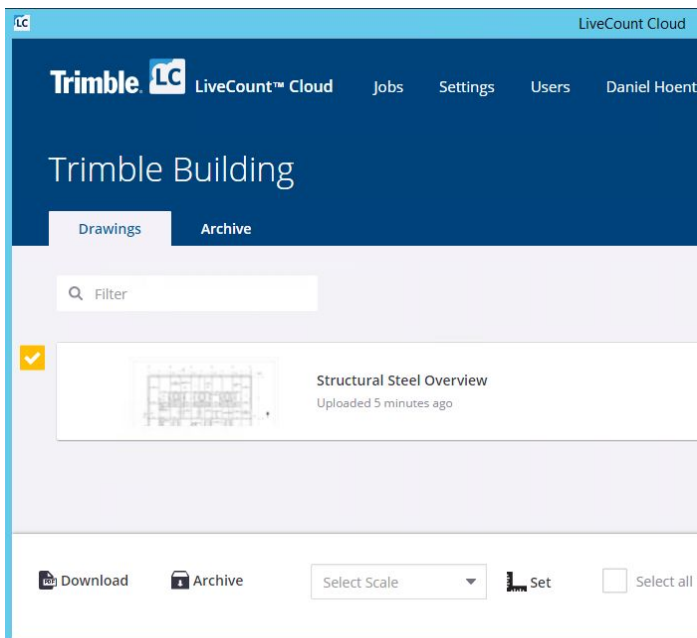
Including takeoffs, typicals, designations, temporary assemblies and items is optional. The new function is available with both the Accubid Classic Estimating as well as the Change Order module.

Tip – Once a master-job or sub-job is associated with Live Count Cloud it cannot be used with LiveCount Desktop and vice versa.



Download and view PDF files from LiveCount Cloud

It is now possible to download files from within the LiveCount Cloud application window. It is also possible to view PDF files that have been uploaded to LiveCount Cloud.





Modifying a job associated to LiveCount Client offline

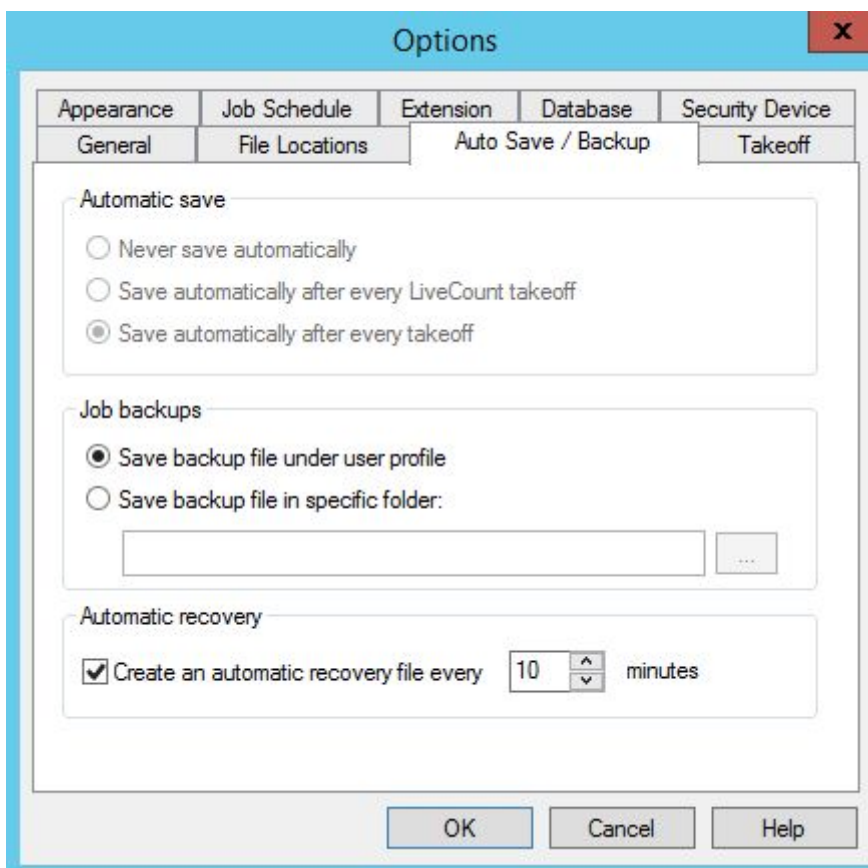
It is now possible to modify an Accubid job that is associated to LiveCount Cloud even when a connection to LiveCount cloud is not possible, for example, because the Internet connection is temporarily unavailable. A message indicates that some features, such as, changing drawing breakdowns are not available.

Improved integration with LiveCount

When using master jobs and sub jobs it is now possible to take over the quantities from the different sub jobs and move them into the master job upon merge.

Job Backup

Accubid Classic will now automatically create a local job backup. The default location for the backup file is C:\Users{user}\AppData\Roaming\Accubid{app name}. The user can pick an alternative local folder as backup location. Users encountered issues when the backup file was stored in the same folder like the job files but access to that folder was temporarily unavailable.





General Feature Enhancements and Bug Fixes

We appreciate the feedback and are continuously improving and evolving the product to meet the needs of our customers. Various smaller improvements to features and functions that have been requested from the field have been made with this version that will further improve the user experience and customer satisfaction.

Accubid Classic - Estimating

- Added a field code for “price per unit area” to the price summary sheet
- Added a field code for job description from the job description tab and add it to notes and the QuotePad
- Added a column for “job completed” to schedule screen
- Find and Replace descriptions for Common Assemblies
- Accubid Classic will now attempt to reconnect to the material database automatically a number of times before showing a message allowing the user to retry manually.
- Ability to assign a Quick take-off code to temp assemblies

Accubid Classic – Change Order Module

- Ability to hide zeros under general expenses in printed reports
- Ability to add job site address to reports
- Ability to create a new database within the change order module

Accubid Classic – Time & Material Billing Module

- Ability to add cell phone number to reports in the Time & Material Billing module
- Ability to show state and zip code on the schedule screen of the Time & Material Billing module

Essential Release Information

Microsoft SQL 2014

This installation routine in this release of Accubid Classic version 14 software installs Microsoft SQL 2014. You will be unable to attach the database packaged with this version of the software to a lower version of SQL. Migrating the database from an earlier version of SQL will continue to work; for example, if you have SQL 2008 and migrate to the current Accubid Classic version 14 software.

Compatible “Update From” Versions

The Trimble Accubid Classic software can be updated directly from the any release of the following:

- Version 11
- Version 12
- Version 13.x

If the currently installed version is not in the list above, please contact MEP Client Services at 1-800-361-3030 for assistance prior to installing.

LiveCount Procedures

When you are working in the LiveCount software, you must send your work to the Classic Estimating application before resuming work on your estimate. Failure to do so results in loss of the work completed in the LiveCount software.

Scalex Support

The Classic Estimating software no longer supports the Scalex measuring tool due to Scalex compatibility issues with the Windows 64-bit operating system.

Product Support

If you have any questions regarding the Essential Release Information presented, please see the Product Assistance section for MEP Client Services contact information.

Update installation instructions

- This instructions below assume you have already downloaded the installation files from the Trimble Client Portal.
- You must have a previous version of the Classic software on the computer where you are installing this update.
- All users must be logged out of the Classic Estimating software before installing this update.

Trimble recommends that you install this update during a non-busy time or after hours to minimize disruptions in your company's workflow.

Accubid Estimating/Change Order Installation Procedures

1. Locate the downloaded installation file. Double-click on it. The installation routine prepares the files.
2. In the **Trimble welcome** screen, click Trimble® Accubid Classic Estimating & Change Order.
3. In the **Welcome to the InstallShield Wizard for Trimble Accubid Classic v14** screen, click **Next**.
4. Review the information in the License Screen. Click **I Accept the terms of the license agreement**.
 - a. You must accept the terms of the license agreement to continue the installation.
 - b. If you wish to obtain a hard copy of the agreement, click **Print**. Click **Next**.
5. In the **Custom Setup** screen, select all options you want to install. Click the **Help** button for more information on selecting options. Click **Next**.
6. Select the proper option buttons in the **Install Material Database/Default Jobs** screen.
 - a. Country
 - b. Measurement

Tip – If you do not want to Install a new material database, clear the checkbox .
7. Click **Next**.
8. In the second **Install Material Database/Default Jobs** screen, review the conversion options available. All checkboxes are selected. Trimble recommends that you convert all jobs to the latest version. If you do not want to convert, clear the appropriate checkboxes .
9. Click **Next**.
10. In the **Ready to Install the Program** screen, click **Install**.
11. Click **Finish** when complete.
12. Depending on your conversion selections (in Step 7 above), the appropriate dialogs open.


Tip – You will be presented with a dialog for each option you chose to convert.

Accubid Estimating Conversion Dialog

1. Select the appropriate folders containing jobs from previous versions. If the **Select Folders** pane does not contain any information, click **Add** and you can enter the folder path or browse to the folder.
2. In the **Convert from which version** field, select the job version you are upgrading from. Click **OK**.
3. In the **Convert Old Job Files** dialog:
 - a. Select the checkboxes next to each job you want to convert. If you do not want to convert specific jobs, clear the checkbox.
 - b. Click **Convert**. When the conversion is complete, click **OK** in the confirmation message.

Accubid Change Order Conversion Dialog

1. Select the appropriate folders containing jobs from previous versions. If the **Select Folders** pane does not contain any information, click **Add** and you can enter the folder path or browse to the folder.
2. In the **Convert from which version** field, select the job version you are upgrading from. Click **OK**.

- 
3. In the **Change Order File Converter** dialog:
 - a. Select the checkboxes next to the jobs/files you want to convert. If you do not want to convert specific jobs/files, clear the appropriate checkbox.
 - b. Click **Convert**. When the conversion is complete, click **OK** in the confirmation message.

Do not close the Trimble Accubid Classic welcome screen if you have other compatible software that requires installation. Refer to the [Additional Software Installation](#) section for more information.

Additional Software Installation

Depending on the software you currently have installed and/or are licensed to use, you may need to install additional software/databases to complete the update process.

Time & Material Billing Installation

1. In the **Trimble welcome** screen, click **Trimble® Time & Material Billing**.
2. In the **Welcome to the InstallShield Wizard for Trimble® Time & Material Billing Install screen**, click **Next**.
3. Review the information in the **License** screen. Click **I Accept the terms of the license agreement**.
 - a. You must accept the terms of the license agreement to continue the installation.
 - b. If you wish to obtain a hard copy of the agreement, click **Print**. Click **Next**.
4. In the *Custom Setup* screen, select all options you want to install. Click the **Help** button for more information on selecting options. Click **Next**.
5. Select the proper option buttons in the *Install Material Database/Default Jobs* screen.
 - a. **Country**
 - b. **Measurement**

Tip – If you do not want to install a new material database, clear the checkbox . Keep in mind that regardless of your selection in this step, you must install the Time & Material SQL database. Refer to [Time & Material Billing Database](#) below for detailed instructions.

6. Click **Next**.
7. In the *Ready to Install the Program* screen, click **Install**.
8. Click **Finish** when complete.

Time & Material Billing Database

If you are currently using or are licensed for the Time & Material Billing software, you must update your item database.

Tip – The instructions provided in this section assume you are using SQL Authentication for the Time & Material Billing database.

1. In the **Trimble Accubid Classic** welcome screen, click **Trimble® Time & Material Billing SQL Database**.
2. In the **SQL Install** dialog, the Use existing SQL Server instance is selected by default for update customers. Click ▼ to select the SQL Instance you want to use.
3. Enter the **Login** and **Password** for the SQL instance already installed. If you do not have this information available, contact your IT professional for assistance.
4. In the **Authentication Type for database** field, SQL Authentication is already selected.
5. Click **Install**. A confirmation message displays when complete.

LiveCount 5.1 Software

1. In the Trimble Accubid Classic welcome screen, click **Trimble LiveCount**.
2. Follow the on-screen prompts to install the update.
3. When complete, click **Finish**.



Trimble Integrator

To take full advantage of the features available in the Trimble Integrator, Trimble recommends you install the update included in this release.

1. In the **Trimble Accubid Classic** welcome screen, click **Trimble Integrator**. The Welcome to the InstallShield Wizard for Trimble Integrator screen displays. Review the information on-screen and then click **Next**.
2. Review the information in the **License Agreement** screen. Click **I Accept the terms of the license agreement**.
 - a. You must accept the terms of the license agreement to continue the installation.
 - b. If you wish to obtain a hard copy of the agreement, click **Print**. Click **Next**.
3. In the **Destination Folder** screen, click **Next**. Trimble recommends you install the Integrator software in the default location.
4. In the **Ready to Install the Program** screen, click **Install**.
5. When complete, click **Finish**.

Complete Installation Procedures

In the Trimble Accubid Classic welcome screen, click **Exit**.

Provided you followed all instructions in this document, you are now ready to use this release of the software applications.

Final Steps

- Open the software using the method you normally do.
- The online help system contains step-by-step instructions on using many of the features included in this release.


Product Assistance

Trimble offers several avenues to obtain help using the Trimble Accubid Classic software program.

Accessing the Online Help

The online help is easy to use and is accessible through any of the following methods:

- Press the [F1] key at any time while using the program to display help for the current screen or dialog.
- Click the Help menu and then select the appropriate option from the menu. You can scan the Table of Contents, use the Index, or the Search function to find the information you are looking for.

Tip – You can also click  or  on the toolbar to open the online help system.

- Use the Index tab to locate key words throughout the help system.
- Use the Search tab to find specific words used in the help system; for example, you might search for the word delete for instructions on deleting certain data from your system.



Trimble MEP Client Services

Before calling Client Services, we suggest you consult the online help. Many of the common procedures and questions are covered in this system.

Trimble MEP Client Services is available during regular business hours Monday through Friday.

Note – *The office is closed on major holidays.*

North America

Toll-free Telephone 1-800-361-3030

Outside North America

Telephone 1-905-761-8800

Email accubidsupport@trimble.com

Website mep.trimble.com

Third-Party Software Support

Trimble software may be integrated with third-party software applications (for example, accounting programs). Trimble MEP Client Services cannot provide in- depth support for third-party applications. Assistance is available only for procedures pertaining to how our software interfaces with non-Trimble applications.

Legal Notices

Trimble Inc.
116 Inverness Drive East, Suite 210
Englewood, Colorado 80112
800-234-3758

Trimble Canada Ltd.
9131 Keele Street
Suite A7
Vaughan, Ontario L4K 0G7
Canada

Copyright and Trademarks

©1999-2017 Trimble Inc. All rights reserved. Trimble, the Globe & Triangle logo, AutoBid, and LiveCount are trademarks of Trimble Inc., registered in the United States and in other countries. Microsoft, SQL Server, and Windows are either registered trademarks or trademarks of Microsoft Corporation in the United States and/or other countries. Other brand and product names are trademarks or registered trademarks of their respective holders.

This publication, or parts thereof, may not be reproduced in any form, by any method, for any purpose, without the written consent of Trimble Inc.

Release Notice

This is the Trimble Trimble Accubid Classic Software Release Notes (Revision A). It pertains to the release 2017 v1 of the Software.

The topics within this manual:

- Are subject to change without written notice.
- Companies, names, and data used in any examples are fictitious.
- Screenshots included in the help topics may not be exactly as in the software application.

Edition

This is the Trimble® Accubid Classic software Release Notes (Revision A ENG); Release 14