

# 2014 v1 RELEASE NOTES

## Vulcan Software

- Introduction
- New Features/Enhancements

Trimble Navigation Limited  
10427 Cogdill Road, Ste 700  
Knoxville, TN 37932  
(800)441-2840

## **Legal Notices**

### **Copyright and Trademarks**

©1998-2013 Trimble Navigation Limited. All rights reserved.

Trimble and the Globe & Triangle logo are trademarks of Trimble Navigation Limited, registered in the United States and in other countries. Other brand and product names are trademarks or registered trademarks of their respective holders.

This publication, or parts thereof, may not be reproduced in any form, by any method, for any purpose, without the written consent of Trimble Navigation Limited.

### **Release Notice**

This is the Vulcan Release Notes (Revision A). It applies to release 2014 v1 of the software.

The topics within this document are subject to change without written notice. Companies, names, and data used in any examples are fictitious. Screenshots included in the topics may not be exactly as in the software application.

### **Edition**

Vulcan Release Notes  
Part # Vulcan8071.08.0114\_Release Notes 2014 v1

Friday, February 14, 2014 11:43 am

---

## Introduction

This document provides basic information about new features and modifications in release 2014 v1 of the Vulcan software.

### What You Receive With Release 2014 v1

- One Vulcan Installation DVD
- One Vulcan *Let's Get Started* foldout

### Upgrade Procedure


Please refer to the Vulcan *Update Installation Instructions* document on the installation DVD for information on installation requirements. Trimble recommends that you print this document to help ensure proper operation of the software application after installation.

### Instructional Videos

The Vulcan Installation DVD includes instructional videos that provide demonstrations of the various features in the software. Trimble recommends that you use this resource whenever possible. These can be viewed directly from the installation DVD.

1. On the main Vulcan Installation screen, click **Vulcan Video Training**.
2. Click on the video you want to view. It launches on your computer in your default media player. When you are done watching it, close the video screen and select another from the screen or click **Back to Main** screen.

**Note** – *The videos also install on your computer. Click the Vulcan Video icon*

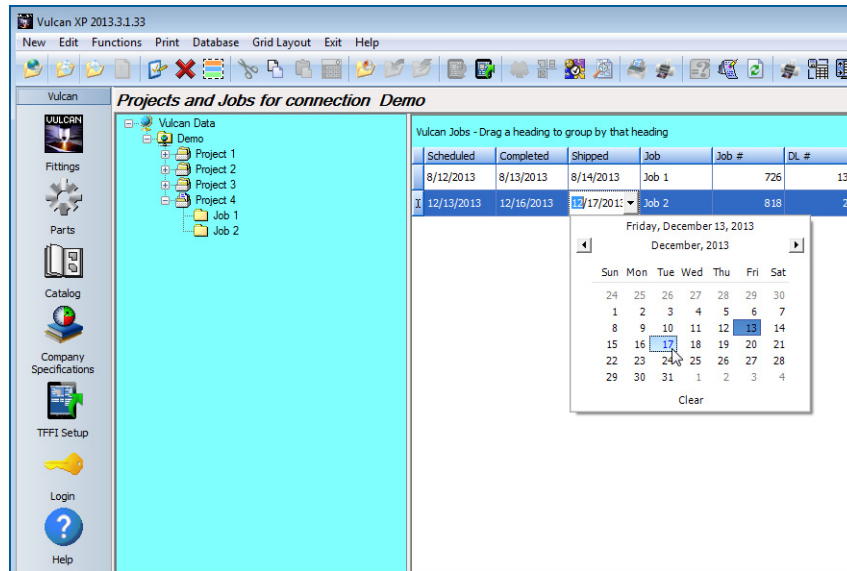
 *on your desktop.*

## New Features/Enhancements

This release of the Vulcan software includes the modifications and enhancements listed below.

### Vulcan Software

Scheduled, completed, and shipped dates can now be changed directly from the grid.



## Software Compatibility Enhancements

### Trimble® Field Fitting Input

Communication between the Vulcan software and the Trimble Field Fitting Input software has been improved. It now includes error messaging if invalid values are entered for fittings.

The image shows a 3D model of a square elbow fitting with dimensions 10, 12, 14, and 4.000. A yellow callout box indicates 'MIN=0.250 MAX=18.000' for the 4.000 dimension. Below the model is a screenshot of the 'TFFI Setup Demo' software interface. The interface includes a 'Fittings' list with '(153) Square Throat / Square Heel Elbow' selected. The 'Properties' panel on the right shows a table of dimensions and their ranges.

Dimension	Min	Max
WB - Min	0.250	0.000
DB - Min	0.250	0.000
WL - Min	0.250	0.000
SB - Def	4.000	0.250 18.000
SL - Def	4.000	0.250 18.000
MA - Def	0.000	0.000 0.000

---

## Trimble® Tracking for Vulcan

The Trimble® Tracking for Vulcan software is now an optional feature in the Vulcan software.

**Note** – *This feature is a purchasable add-on to your Vulcan software. Trimble is making it available at no charge to all users through August 2014. After August, you must purchase the add-on software to continue using it. Contact your Trimble Sales Representative for more information.*



The Tracking for Vulcan functionality allows you to easily track fittings anywhere - in the shop, field, and so on.

Enhanced features in this release include:

- Compatibility with smartphones using a Bluetooth scanner.  
**Note** – *The software no longer works with older hand-held scanners. Purchasing an inexpensive Bluetooth device may provide better financial incentives to your company.*
- Refer to the systems specifications document on the Trimble MEP website for more Bluetooth compatibility information.

---

## CAD/Estimating Systems

You can now import fittings from most CAD and estimating systems into the Vulcan software. This allows you to bring in fittings from another software program, but still use the Vulcan software to process, produce reports, track your fittings and so on.

Trimble CAD and Estimating compatibility includes:

- Trimble® AutoBid® SheetMetal
- Trimble® DuctDesigner 3D®
- Trimble® Design Link
- Trimble® Field Fitting Input

Additionally, the Vulcan software is compatible with several non -Trimble applications. Contact MEP Technical Support for more information.

## Additional Modifications

- Connectors now properly apply to drop cheek elbows when exiting end is larger than entering end
- Fitting #147-Damper Offset from top to bottom now works in metric
- Imported spiral pipe now shows correct length on spiral pipe list
- Damper Rod Offset is now correct when duct is 4 pc. Offsetting is accurate on Blank #3
- A shipping list is now generated when job contains Catalog fittings
- Heel wrapper on radius elbow now prints the straight on the correct end of a label
- Fitting #608 is now processes liner blanks correctly
- Errors no longer display when printing labels on first job after starting the Vulcan software
- Nested fitting input window no longer displays an error when changing view to classic
- Labels of 4 pc rect tap now reports properly.
- Fitting #716 Twisted Elbow now saves the construction style selected in default
- Fitting #242 DC Sq Throat/Heel Elbow now allows you to put on a different Throat
- Fitting #194 DC Y Branch now included the Drop Cheek 2 pc Wrapper
- Corrected the bulk reporting on the Shipping list
- Editing the inner wall of a conical round tap when tap is on an oval body now allowed

- 
- Ftg # 180 and 183 now saves default offset locations
  - Catalog Fittings now appear on Audit Trail