



Trimble® FabShop

We are excited to announce that the Vulcan program is rebranding and is now officially Trimble® FabShop. Please print and read this entire document. This document contains summary information on new features, late-breaking product information, updates, and troubleshooting tips not covered in the Trimble® FabShop documentation.

- ▶ Introduction
- ▶ New features and change
- ▶ Languages
- ▶ Upgrade procedure
- ▶ Legal notices

Introduction

These release notes describe the features and enhancements that are new in version 2016 v3 of the Trimble® FabShop software. For further support information, go to mep.trimble.com/support/trimble-fabshop.

About the Trimble® FabShop software

The Trimble® FabShop software application allows HVAC Contractors and duct manufacturers worldwide to increase shop productivity, reduce waste and improve the “bottom line.” The Trimble® FabShop software provides the following benefits:

- Comprehensive Fitting Libraries
- Automatic & Manual Segmenting
- Easily create customized, color-coded labels and reports
- Automatic Shape Nesting
- Trimble® FabShop software fully integrates with many plasma cutting tables, coil lines, and CAD programs
- Fitting input is quick, simple, and non-repetitive

The Trimble® FabShop software includes tools that allow users to import fitting information (for fabrication) directly from several CAD software programs, including Trimble® DuctDesigner 3D®. Trimble® FabShop software customers can also import data from the Trimble® AutoBid® SheetMetal.

Version: 2016.3.98
Date: March 2017

Compatibility

Operating System Compatibility

The Trimble® FabShop software, Release 2016 v3, is compatible with the following 32-bit and 64-bit Microsoft® Windows® Operating Systems:

- Windows 10
- Windows 7
- Windows XP

Windows XP Compatibility

Beginning with the 2015 fourth-quarter release, Trimble will no longer support the Windows XP operating system for the Trimble® FabShop office software. This is in accordance with Microsoft ending support/updates, leaving your computer system vulnerable. Please click the link below for additional information.

<http://windows.microsoft.com/en-us/windows/end-support-help>

Note: Trimble will continue to support Windows XP Embedded for the Controller software.

Update Customers

Installation Media

Beginning with this release and future releases will be available by download only. If you require a DVD, please contact MEP Client Services at 1-800-441-2840.

Installation Requirements

Updating from version 2012 v2 or NEWER

You do not have to uninstall the previous release of the Vulcan software application. You can install the 2016v3 release of Trimble® FabShop on top of any Trimble® FabShop software version 2012 v2 or newer.

Updating from versions 2012 v1 and PRIOR

For customers updating to Release 2016v3 from release 2012 v1 or any previous version, you must uninstall your current Vulcan software application prior to installing release 2016 v3.

Update Documentation

The Trimble® FabShop software installation image includes documentation that provides information about new features included in this release (*Release Notes*). It also includes an *Update Installation Instructions* document. It is highly recommended that you print these documents and review thoroughly prior to installing the update.

Component Conversion

Updating from versions prior to 2012 v1 ONLY

For customers updating to Release 2016 v3 from a version prior to 2012 v1, you will need to convert shop data accessories to components. For more information, refer to:

Component Conversion instructional video on the installation image:

- a. On the main Trimble® FabShop Installation screen, navigate to **Software Instructions**.
- b. Click **Video Training**. The videos are categorized for easy navigation.
- c. Click on **Component Conversion**. The video launches on your computer in your default media player.

Issues/Work-Around Procedures

Job Information / Options

Before entering a job, review the job preferences under **Job Information > Options** to ensure they are correct. If you need to make changes, make sure you click **Save Job Defaults** when you are done.

Note: If you do not typically cut metal from the inside, make sure this checkbox is cleared.

Nesting Processes and Sheet Review

The Nesting Filler Parts and Nesting blanks in holes functionality in the Trimble® FabShop software provides features that use your available materials in a more cost effective manner, which will reduce waste over time. Because the Trimble® FabShop software must determine how to best place the nested parts, you may experience slower processing when using these features. Trimble highly recommends that you perform a complete sheet review prior to sending the sheet to the cutter. This will ensure there are no “overcuts”.

Getting Technical Information

Trimble provides easy access to Technical Support. This information is available from the following sources:

Online Help

Online help files are automatically installed with this release of the Trimble® FabShop software.

- Click Help. Browse the Table of Contents or Index to locate the topic needed.
- You can press [F1] in many of the Trimble® FabShop software windows to obtain help on that topic.
- Refer to the instructional videos on the installation DVD.

From the Internet

- From the program’s Help or Support menu, click **Submit a Support Ticket**.
- Send an e-mail directly to Trimble MEP Client Services at MEPsupport@Trimble.com.
- Online Support is available. Contact a Trimble MEP Client Services Representative for more information.

Contact Trimble MEP Client Services

To speak directly with a Client Services Representative, please call 1-800-441-2840.

New features and changes

The following improvements have been made to the <Product Name> <noun>:

Rebrand

We excited to announce that the Vulcan program is rebranding and is now officially Trimble® FabShop.

Recycling Bin

This feature allows users to recover deleted projects and jobs. Projects and jobs reside in the recycling bin for 30 days and then are automatically deleted.

Output a Cut File

This feature creates custom posts for controllers not supported by the Trimble® FabShop communication programs. The post generator utilizes Word Address\EIA and absolute coordinates for controllers that accept file downloads.

Company Logos

Company logos may now be stored anywhere on the local computer or company network.

Support Trimble® MEP add-in for Autodesk Fabrication CADmep™ 2017

Support for Autodesk Fabrication CADmep™ 2017 is now available for download. Please click the following link for more information.

http://mepsolutions.trimble.com/CADmep-Integration-Download-File_LP-CADmep-Download.html

Languages

This release of Trimble® FabShop is available in the following languages:

- Chinese (Simplified)
- Danish
- Dutch
- Finnish
- French
- German
- Japanese
- Korean
- Russian
- Spanish

Upgrade procedure

Introduction

This document outlines the installation requirements for release 2016 v3 of the Trimble® FabShop software.

Note – *This release of the Trimble® FabShop software is available by download only. If you require an installation DVD, please contact MEP Client Services at (800) 441-2840.*

Upgrade Procedure

Trimble recommends that you print this document to help ensure proper operation of the software application after installation.

Depending on your current operating system and other required software, the installation routine readies your computer for the Trimble® FabShop software update.

- This process may require a reboot of your machine.
- An internet connection may be required in some instances.

Please contact MEP Client Services at (800) 441-2840 with for assistance.

Tracking for Trimble® FabShop

The Tracking for Trimble® FabShop functionality allows you to easily track fittings anywhere - in the shop, field, and so on. This feature is incorporated into the Trimble® FabShop software system.

Note – *Installing it separately should be done only if you want a stand-alone version of this feature. Refer to [Install Stand-Alone Tracking for Trimble® FabShop, page 12](#) for details.*

Preliminary Steps

Windows® XP® Users*: Verify Windows Updates

Verify that you have all required operating system updates installed on your computer before proceeding.

1. Go to the Windows **Start** menu and navigate to **My Computer**. Right-click on the command.
OR
Right-click on the **My Computer** on your Windows Desktop.
2. Click **Properties**. The System Properties window opens.
3. Verify that you have **Service Pack 3** installed.
4. Refer to the *Windows Update Instructions* document on the Trimble® FabShop software installation DVD for more information (*Manuals* folder).

*Beginning with the 2015 fourth-quarter release, Trimble will no longer support the Windows XP operating system for the Trimble® FabShop office software. This is in accordance with Microsoft ending support/updates, leaving your computer system vulnerable. Please click the link below for additional information.

<http://windows.microsoft.com/en-us/windows/end-support-help>

Note: Trimble will continue to support Windows XP for the Controller software only.

Close Windows Applications

Close all Microsoft® Windows based applications on the computer where you are installing, including e-mail software.

Backup Trimble® FabShop Database

BTip – Always perform a full backup of your current database before installing any updates to your software.

1. Go to the Windows **Start** menu.
2. Navigate to *Trimble® FabShop* and click on it one time. Click **Database Maintenance Utility**. The Database Maintenance Utility loads.
3. Verify or select the following:
 - Available instances of SQL**
Select the appropriate instance from the list.
 - Please pick a database to use**
Select the appropriate database for maintenance.
4. On the *Backup/Restore* tab, click **Backup now**. The lower corner of the window displays a backup is successfully completed message.
5. Close the *Database Maintenance* window by clicking the **X** in the upper right corner.

Verify Current Installed Version

Before you begin the update installation process, you must verify the version of the currently installed Trimble® FabShop software. Based on the version installed, additional steps may be required.

1. Open the Trimble® FabShop software application.
2. Go to **Help > About Trimble® FabShop**. Verify the current installed version.



3. Based on the version currently installed, refer to the appropriate topic below.

Version 2012 v2 and later

You can install this release directly over your current release. Uninstalling is not required.

Versions 2012 v1 and prior releases

Please contact MEP Client Services at (800) 441-2840 or camsupport@trimble.com for instructions.

Copy Installation Files to USB Device*

*Also referred to as Flash Drive, Jump Drive, Thumb Drive

Note – *This is required only for computers without a DVD drive or for those that cannot connect to a network shared drive.*

1. After you have completed downloading the ISO Image, insert the USB device into an available port.
2. Mount the Trimble® FabShop installation ISO Image.

If the main installation screen does not open a few seconds after you insert the installation DVD, proceed as follows:

- Double-click on the **My Computer / Computer** icon.
- Locate the drive containing the Trimble® FabShop Installation DVD. Click on it to display the contents of the DVD.
- Double-click **Autorun.exe** to open the Trimble® FabShop main installation screen.

Note – *Depending on your computer settings, the .exe extension may not display.*

3. In the main Trimble® FabShop installation screen, click **Explore Installation Disk**. The contents of the installation ISO Image display on-screen.
4. On your keyboard, press [Ctrl]+[A] to select all required installation files. Right-click and select **Copy** from the pop-up menu.
5. Navigate to the location of the USB drive. Right-click on it and then select **Paste** from the pop-up menu.

BTip – The installation files must be at the root of the USB device. Do not make a folder on the USB drive.

6. Refer to [page 8](#) for instructions on opening the main installation screen.

Installation Options

Installation from ISO Image

1. Mount the ISO Image as outlined in the Trimble® FabShop ISO Download email.
2. Refer to the installation sections of this document for further instructions.

USB Installation

Note – *This is required only for computers without a DVD drive or for those that cannot connect to a network shared drive.*

1. Insert the USB device containing the files copied in the instructions detailed on [page 7](#) into an open USB port on the computer where you want to install this update.
2. On your Windows Desktop, double-click **My Computer/Computer** icon and navigate to the location of the USB device.
3. Double-click on **Autorun.exe** to open the Trimble® FabShop main installation screen.

Note – *Depending on your computer settings, the .exe extension may not display.*

4. Refer to the installation sections of this document for further instructions.

Trimble® FabShop Software Update Installation

Note – *Make sure you verify the version of your installed Trimble® FabShop software before proceeding. Depending on the version currently installed, additional steps may be required before you install release 2016 v3. Refer to [page 6](#) for more details.*

Release Versions 2012 v2 and Newer

BTip – This procedure installs the Trimble® FabShop software, release 2016 v3 exactly as it was previously installed. If you want to change your current installation, you must contact MEP Client Services at (800) 441-2840 for recommendations and assistance.

Trimble® FabShop Software Update Installation Procedure

The instructions below assume the installation ISO Image or USB device (if applicable) is already mounted on the computer and that the main Trimble® FabShop software installation screen is open. If it is not, refer to [page 6](#) for instructions.

1. In the *Software Installation Links* area, click **Trimble® FabShop**. The InstallShield Wizard prepares to install the software.
2. The *welcome* screen displays. Click **Next**. The installation routine automatically applies required third-party software updates. Please be patient as this process may take a few minutes.
3. Click **Finish** to complete the installation.

You must now install the update to the Table Communications software.

Table Communications Update Installation Procedure

The instructions below assume the installation ISO Image or USB device (if applicable) is already mounted on the computer and that the main Trimble® FabShop software installation screen is open. If it is not, refer to [page 8](#) for instructions.

1. In the *Software Installation Links* area, click **Table Communications**. The InstallShield Wizard prepares to install the software.
2. The *welcome* screen displays. Click **Next**.
3. Click **Finish** to complete the installation.

Trimble® FabShop Software Final Steps

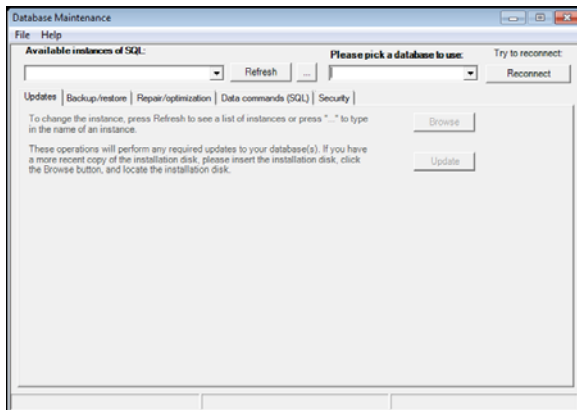
When you complete the installation procedures, there are some final steps required before you can start working in this version of Trimble® FabShop. This section provides you with the necessary steps.

Database Maintenance

To ensure that you have the most up-to-date fabrication data, you must update the database.

Note – *Your existing database is automatically backed up during the maintenance procedure.*

1. Go to the Windows **Start** menu.
2. Navigate to **Trimble® FabShop** and click on it one time. Click **Database Maintenance Utility**. The Database Maintenance utility loads.



3. Verify or select the following:


Available instances of SQL

Click **Refresh** for a list of available databases and then click ▼ and select the appropriate instance from the list.

OR


If you know the name of your database, you can click *** and then enter the SQL Instance. Click **OK**.

Note – **This must be a local database!** The database typically is your computer name \ followed by the database name, for example, if the name of your computer is WKS200, the entry will be WKS200\TRIMBLE. To locate a computer name, right-click the **My Computer/Computer** icon (on your desktop). Go to **Computer Name**.

- **Please pick a database to use**
Select the appropriate database for maintenance.
4. On the *Updates* tab, click **Update**.
The lower corner of the window displays the updates completed.
 5. Close the *Database Maintenance* window by clicking the  in the upper right corner.

Open Trimble® FabShop Software



Click  on your Windows Desktop.

OR

Go to Windows **Start** and navigate to **Trimble > Trimble® FabShop**.

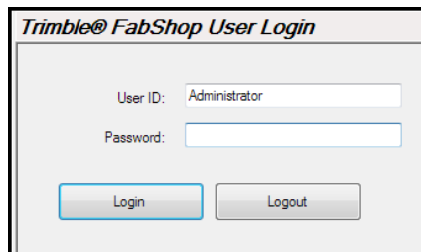
Note – If you did not perform the Database Maintenance update, a message displays reminding you to do so.

The Trimble® FabShop 2016.3 window opens.

Login

The Login feature offers better security and safeguards the valuable information in your database. You can bypass the login feature, if desired. You can also add more users and define various levels of access to provide the best security possible.

Depending on your Trimble® FabShop software settings, you may need to login to the database when it is first opened.



1. Enter the following information:

User ID	Administrator
Password	pw


2. Click **Login**. The main Trimble® FabShop software window opens.

Quick Login

If you want to set the Trimble® FabShop software up to *not* require a login every time the software is opened, proceed as follows.

1. Click  located in the lower left column.



2. Click . The Users dialog opens.
3. Click the box next to **Allow Quick Logon**. A is placed in the box.

Note – This feature saves the login information, eliminating the need to enter it every time the application is opened. Please be aware that it does not provide security to your database as anyone can open the software when this option is active.

Install Stand-Alone Tracking for Trimble® FabShop

You might consider installing a stand-alone version of this feature if tracking will be done on a computer other than where the Trimble® FabShop software is installed (for example, in an office environment, rather than in the shop). You must connect the stand-alone Tracking for Trimble® FabShop functionality to the main Trimble® FabShop database.

CAUTION – Do not install the Tracking for Trimble® FabShop application on the same machine as your Trimble® FabShop software. The is already integrated into the Trimble® FabShop software.


If you need to install Tracking for Trimble® FabShop functionality as a stand-alone, complete the procedures outlined below.

Note – *The instructions below assume the installation ISO Image or USB device (if applicable) is already mounted on the computer and that the main Trimble® FabShop software installation screen is open. If it is not, refer to [page 8](#) for instructions.*

1. In the *Software Installation Links* area, click **Trimble® FabShop**. The InstallShield Wizard prepares to install the software. **Please be patient**. This procedure may take a few minutes.
2. The *welcome* screen displays. Click **Next**. The installation routine automatically applies required third-party software updates.
3. The *License Agreement* displays on the screen. Read the agreement. Choose **I accept the terms of the license agreement**. Click **Next**.
4. The *Support License Agreement* displays on the screen. Read the agreement. Choose **I accept the terms of the support license agreement**. Click **Next**.
5. Trimble recommends that you accept the default in the *Choose Destination Location* screen. Click **Next**.
6. In the *Ready to Install the Program* screen, click **Install**.

Final Steps: Tracking for Trimble® FabShop

When you first open the Tracking for Trimble® FabShop application, you must set up a valid database connection to the Trimble® FabShop software.

1. Click the **Tracking for Trimble® FabShop** icon  on your Desktop.
2. In the *Database Connection* dialog, click Yes. The Database Connection window opens.
3. Enter the following information in the Connection Information pane:

Name

This is the user-defined name of your database.

Description

Enter a description of the database. This is a user-defined field.

4. In the *SQL Server Information* pane, complete the following:

Servers

Click ▼ and select the appropriate server from the list.

Databases

Click ▼ and select the Trimble® FabShop database you want to use from the list.

Database Version

The database version is automatically populated with the appropriate information.

Enter the following (if defaults are not present):

User Name	sa
Password	Trimble1

B Tip – At any time, you can click **Refresh Servers** to display a current list of available servers.

5. Click **OK** when you are done.

Legal notices

Trimble Inc.
10427 Cogdill Road, Suite 700
Knoxville, TN 37932
(800)441-2840

Copyright and Trademarks

©2017 Trimble Inc. All rights reserved.

Trimble and the Globe & Triangle logo are trademarks of Trimble Inc., registered in the United States and in other countries. Other brand and product names are trademarks or registered trademarks of their respective holders.

This publication, or parts thereof, may not be reproduced in any form, by any method, for any purpose, without the written consent of Trimble Inc.

Release Notice

This is the Trimble® FabShop Update Installation Instructions (Revision A). It applies to release 2016 v3 of the software.

The topics within this document are subject to change without written notice. Companies, names, and data used in any examples are fictitious. Screenshots included in the topics may not be exactly as in the software application.

Edition

Trimble® FabShop Update Installation Instructions
Part # Trimble® FabShop 8071.08.0515_Update Installation Instructions 2016 v3

www.mep.trimble.com