

# Trimble Field Points

## TRIMBLE FIELD POINTS V4.1

We are pleased to announce releases of the Trimble Field Points software product as follows:

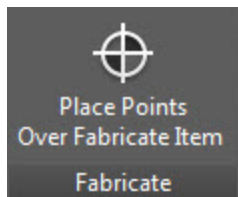
- Version 4.1  
Compatible with Autodesk® AutoCAD® 2017 and Autodesk® Revit® 2017

This document provides you with important information pertaining to the enhancements and/or modifications included in this release of our software.

## AutoCAD Compatible Applications

The Trimble Field Points software now behaves as expected when you perform the following functions:

- Auto-fill custom attributes included in attributes field and description field on both "Place Points over Blocks" and "Place Points over Markers" commands
  - In the dialog box you now have a drop down carrot to choose the blocks attributes as point attributes
- Place different types of Markers
  - This allows the user multiple options for creating specific points over each type of marker
  - Multiple markers may be placed inside a block for additional customization
  - Two default marker types are provided and additional marker types can be created at the users discursion
- Place Points over Autodesk Fabrication Items



(Screen shot of new panel)

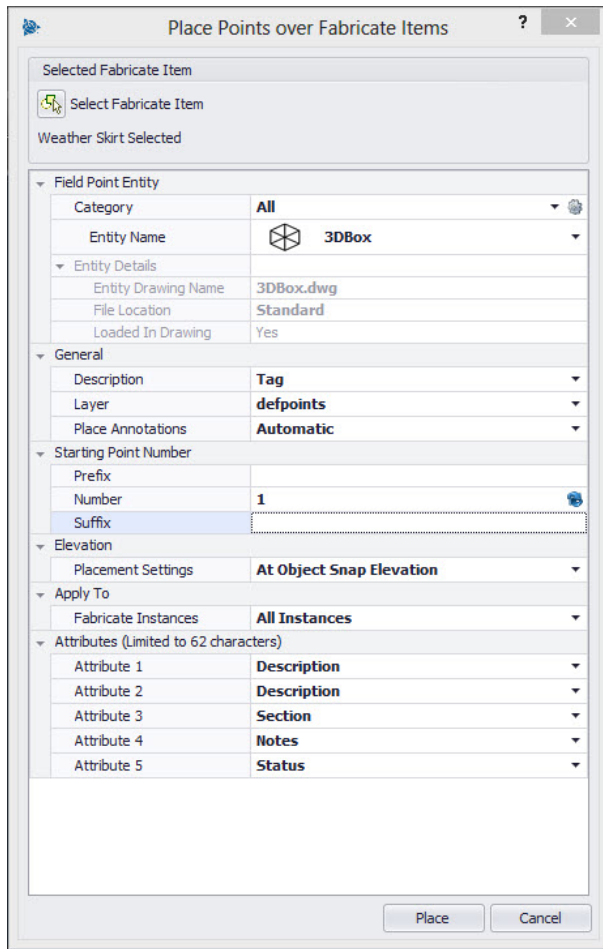
- This allows customers to place points over already placed Fabricate items in the model.
- The following CID numbers are supported;
  - Hangers CID 838
  - Elliptical Reducers (Round Wall/Slab Sleeves) CID 149, 1049
  - Rectangular Roof Curbs CID 321, 322
  - Girders (Structural Beams/Columns) CID 910
  - Rectangular Straights (Wall/Slab Penetrations) CID 972, 1972

Version: Trimble Field Points v4.1

Date: March 2017

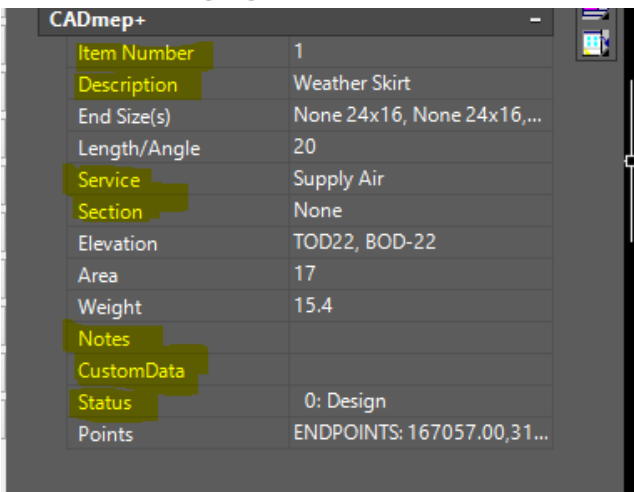
©2017 Trimble Navigation Limited. All rights reserved. Trimble, the Globe & Triangle logo, Trimble Field Points is a trademark of Trimble Navigation Limited, registered in the United States and in other countries. Other brand and product names are trademarks or registered trademarks of their respective holders.

- Floor Drains CID 1189, 2189, 2190, 2191, 2192



(Screenshot of Fabricate dialog box)

- Note: The highlighted items from the below screenshot are populated in the attributes field:



## Revit Compatible Applications

The Trimble Field Points software now behaves as expected when you perform the following functions:

- Auto-fill custom parameters included in attributes field and description field on both "Place Points over families" and "Place Points over Markers" commands
  - In the dialog box you now have a drop down carrot to choose the custom parameter as point attributes
- Place different types of Markers
  - This allows the user multiple options for creating specific points over each type of marker
  - Multiple markers may be placed inside a family for additional customization
  - Two default marker types are provided and additional marker types can be created at the users discursion

## Update Information

**⚠ Caution** - Please ensure that you install the Trimble Field Points software compatible with your version of AutoCAD or Revit!

**⚠ Caution** – It is not recommended that you upgrade an active project (epically in work shared Revit projects) unless there are specific bug fixes that apply to your situation.

- If you must upgrade a project before its completion;
  - Please refer to Autodesk for best practices
  - It is recommended you create a backup of the project prior to the upgrade

**Note:** *If you need assistance installing this release, please contact MEP Client Services at 1-800-234-3758.*