

Trimble Accubid Enterprise Estimating

For electrical, industrial mechanical, and ITS contractors, Trimble Accubid Enterprise Estimating is the ultimate spec-driven estimating tool.

Next Generation Estimating

Enterprise Estimating offers true multi-user and multi-branch support*, allowing several users access to the same project simultaneously without restrictions. The specification, assembly and item libraries hold the key item material and attribute information, so that users need only manage a few fields at the time of takeoff. Using intuitive and customizable takeoff pads, graphic shortcuts allow the user to quickly select items and assemblies for takeoff.

With integrated pricing technology, contractors can use a streamlined process to obtain up-to-date pricing for projects, including pricing from vendors not associated with pricing services.

Enterprise Estimating emulates the life cycle of a project, using logical business rules and centralizing the data. By using a project workflow approach, contractors can work within core aspects of the project.

Takeoff pad icons allow for quick and accurate estimates

Powerful specification driven takeoff tools allow for increased accuracy and speed

Quantify costs across breakdown categories, for both the client and the project manager

Estimating with Confidence

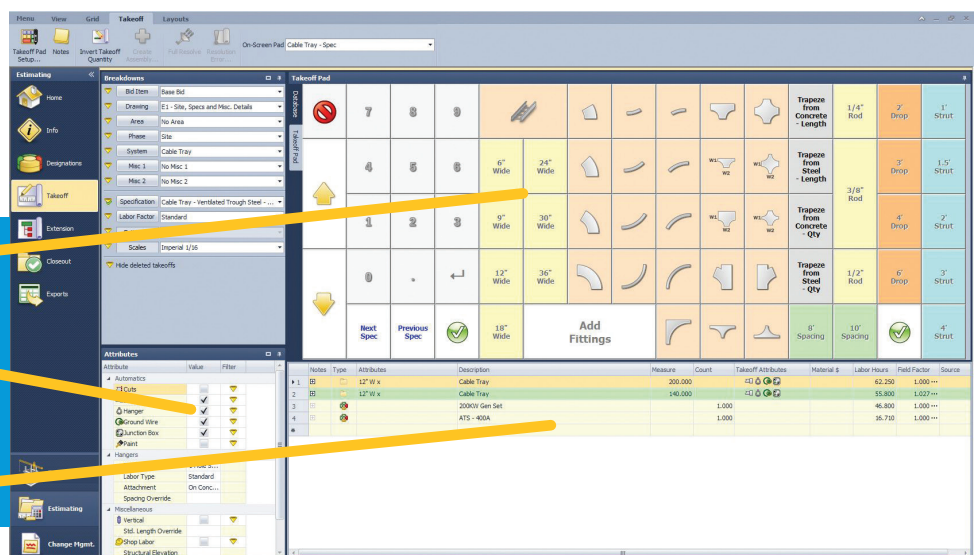
Updates to takeoffs are viewed in real time, allowing users to takeoff an item and immediately view the results in the bill of material and closeout screens without running a report. Additionally, data validation immediately informs users of any issues or conflicts in a takeoff.

Estimators save time and maintain consistency with assemblies that can be nested and contain user defined variables. Through the use of Intelligent Assemblies and Specifications, the number of assemblies required is drastically reduced. Once a bid has been awarded, contractors can break an estimate down into any structure to create a Schedule of Values.

Powerful Reporting

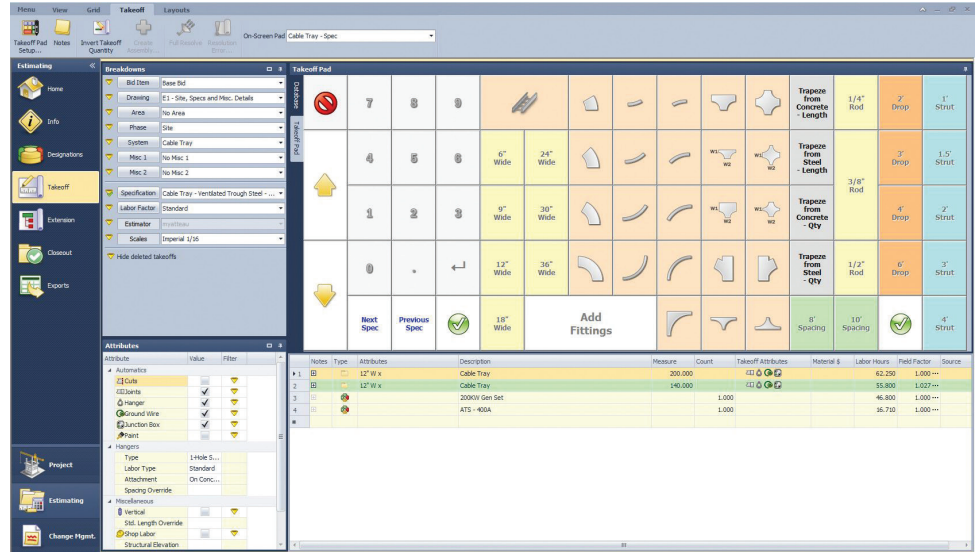
The reporting module has the ability to create professional reports that aggregate and analyze data from across the entire project. With the Enhanced ReportWriter users can quickly create custom reports with their custom logo. Users can also easily view internal and external costs to the owner when creating a Proposed Change Order Report.

**Only available with the Accubid Enterprise Pro and Bidwinner Plus versions*



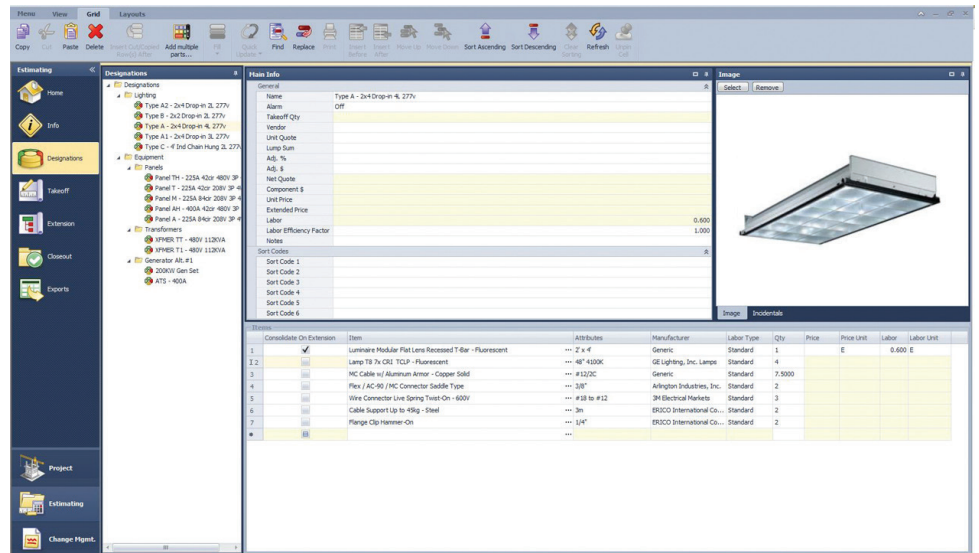
Key Features

- ▶ Integrated supplier pricing ensures bid accuracy
- ▶ Vendors can easily view quantities to ensure correct volume pricing
- ▶ Access multiple labor columns with preloaded industry standard units
- ▶ Quantify costs across breakdown categories, for both the client and the project manager
- ▶ Data can easily be pivoted, speeding up the process of obtaining and representing information for tendering the bid
- ▶ The robust reporting tool provides a wide selection of standard reports and the ability to create custom reports
- ▶ Specifications can be quickly modified to allow for various bid alternates or value engineering suggestions
- ▶ Custom Takeoff Attributes allow for increased flexibility
- ▶ SQL database technology provides a powerful, stable and robust platform
- ▶ If using external bid closing



System Requirements

- ▶ **PROCESSOR:** 2.5 GHz single core chip for the client
- ▶ **RAM:** 16GB
- ▶ **STORAGE:** 8 GB Disk Space
- ▶ **OPERATING SYSTEM:** 64-bit Windows® 8.1, Windows® 10, or Windows® Server 2012 or newer operating systems with the latest service pack and hot fixes
- ▶ **DATABASE:** Microsoft SQL Server 2012 or newer with the latest service packs and hot fixes
- ▶ **DISPLAY:** 1280 x 1024 screen resolution (small or medium font size)



TRIMBLE MEP
 116 Inverness Drive East, Suite 210
 Englewood, CO 80112
 1-800-234-3758
 mep.trimble.com

© 2016, Trimble, Inc. All rights reserved. Trimble and the Globe & Triangle logo are trademarks of Trimble Navigation Limited, registered in the United States and in other countries. All other trademarks are the property of their respective owners.

