

WITH A COMPREHENSIVE MATERIAL DATABASE CONTAINING OVER 9,500 ASSEMBLIES--TRIMBLE ACCUBID CLASSIC IS FLEXIBLE ENOUGH FOR ANY SIZED PROJECT

Trimble Accubid Classic is the original full featured electrical estimating solution that facilitates the complete construction workflow, from estimating to purchasing, project management and billing.

PROVEN MATERIAL DATABASE

Installed as a client solution only, Trimble Accubid Classic is powered by a comprehensive material database with over 33,000 items and 9,500 assemblies--flexible enough for any sized project. You can hit the ground running with labor units, labor factoring, labor tracking and cost codes built right into the program.

DYNAMIC TAKEOFFS

Easily create custom, project specific assemblies on-the-fly allowing Trimble Accubid Classic to meet the needs of your unique projects. The built-in dynamic takeoff capability automatically calculates the required quantities for each component in an assembly based on length or count specifications.

MULTI-LEVEL BREAKDOWNS

Applying takeoff breakdowns in a multi-dimensional format, allows users to view subtotals across breakdowns in any order. With complete flexibility and control, you can easily re-sort the extension and breakdown the bid by any combination of breakdowns.

LIVE EXTENSIONS

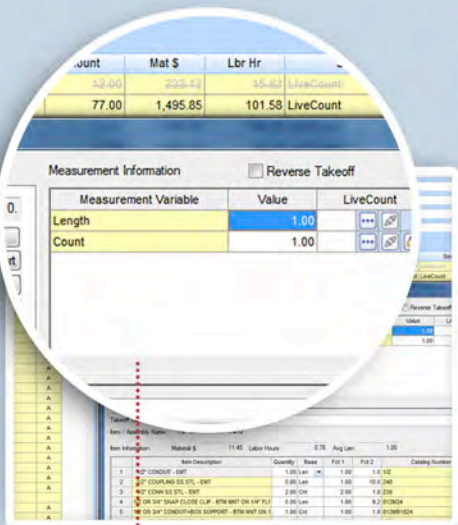
The Live Extension functionality instantly calculates each takeoff as it occurs. With a single click, you can jump from the audit trail to the extended bill of materials. Easily sort the bill of materials to perform last minute checks and ensure accuracy. Changes to the quantity, material and labor are immediately reflected in the final price.

INSTANT BID SUMMARY

Trimble Accubid Classic's Instant Bid Summary allows you to compare components of the estimate using labor-to-material ratios, costs per foot, per system or per floor. With Accubid Pro or BidWinner Plus, you can create multiple bid summaries, each with different combinations of takeoff breakdowns. Last minute adjustments, modifications, and 'what-ifs' can be easily and seamlessly accommodated.

PROJECT MANAGEMENT

With sophisticated project management features you can break down the entire bid by logical and physical aspects such as floor, system, area, cost code, or drawing, and export this information to other applications including Excel, MS Project, and Trimble ConstructJob. Project managers can quickly create a preliminary construction schedule or e-mail material lists to suppliers.



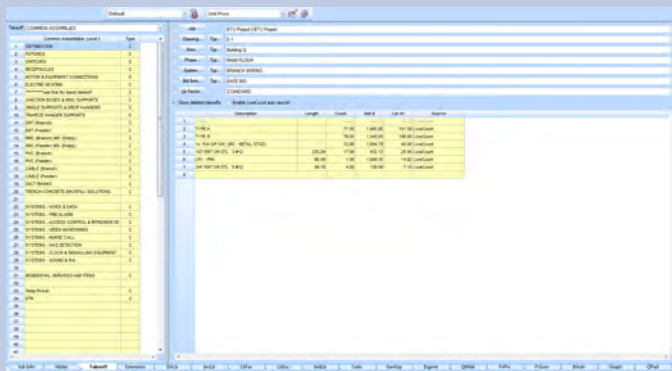
AUTOMATICALLY CALCULATE THE REQUIRED QUANTITIES FOR EACH COMPONENT IN AN ASSEMBLY BASED ON LENGTH OR COUNT SPECIFICATIONS

Calculated (\$)	Variance (%)	Modified (\$)	Modified (%)	% Final Price
482,968.00	-37.06	304,000.00	7.907	-0.158
3,940.66		-6,080.00	-2.000	0.103
665,000.00		3,940.66		17.297
8,750		100,789.00	750	2.201
1,250		3,719.64	3.000	27.349
21,824.19		3.000	0.000	44.375
281,159.03		14.000	7.310	0.833
1,350.00		3.000	0.035	
1,303.53		3.000	0.034	
		2.000		
315,356.39		10.017	8.203	
16,685.38		5.000	0.434	
37,464.86		5.000	0.974	
412,098.81		18.000	10.719	
1,854.00		4.000	0.040	
1,790.18		4.000	0.040	
		-2.567		

UPDATED FINAL PRICING SCREEN SHOWS BOTH THE PRICING AND PERCENTAGE CALCULATIONS

Key Features

- Seamless integration with Trimble Accubid LiveCount and Trimble Accubid Change Order
- Updated final pricing screen shows both the pricing and percentage calculations
- Cost Allocation for Incidental Labor, Labor Factoring, Labor Escalation and Indirect Labor
- Easily print all vendor and sub-contractor pricing to compare material and pricing quotes
- Quickly copy a takeoff and paste as a temporary assembly for improved efficiency and time savings
- Get full pricing integration with an improved link to TRA-SER Link 2 Specifications by Trade Service
- Add your quoted vendors to the Change Order log screen for a more complete Change Order log



Description	Quantity	U...	Item Labor	Labor	Lab Adj %	Total Hours
2" CONDUIT - EMT	4,555	C	7.60	8.04		366.32
4" CONDUIT - EMT	65	C	14.80	14.80		9.62
2" ELBOW 90 DEG - EMT	48	C	45.00	47.81		22.95
4" ELBOW 90 DEG - EMT	2	C	80.00	80.00		1.60
1/2" CONN SS STL - EMT	1,716	C	8.00	7.50		128.70
2" CONN SS STL - EMT		C	18.00			
1/2" COUPLING SS STL - EMT	1,716	C				
2" COUPLING SS STL - EMT		C				
3/4" CONDUIT - RMC - GALV	1,398	C	4.95	4.95		69.20
4" CONDUIT - RMC - GALV	300	C	23.40	23.40		70.20
1 1/4" ELBOW 90 DEG - RMC - GALV	14	C	15.80	15.80		2.21
2" BUSHING - PLASTIC		C	5.80			
2" EMT & 1 1/2" RMC 1-PC STRUT CLAMP W/ SADDLE - PLTD		C	8.60			
1/2 OR 3/4" SNAP CLOSE CLIP - BTM MNT ON 1/4" FLNG HNGR	1,840	C	8.20	8.20		151.54
1/2 OR 3/4" CONDUIT-BOX SUPPORT - BTM MNT ON 1/4" FLNG HNGR	850	C	9.20	9.20		78.54
1/2" FLEX - ALUMINUM	2,560	C	3.00	3.73		95.40
3/4" FLEX - ALUMINUM	1,664	C	3.90	3.90		64.96
1 1/2" FLEX - STEEL	100	C	9.90	9.90		9.90
2" FLEX - STEEL	160	C	14.80	14.80		23.68
1 1/4" CONDUIT - PVC40	80	C	5.30	5.30		4.24
4" CONDUIT - PVC40	340	C	14.50	14.50		49.30
4" ELBOW 90 DEG - PVC40		B C	105.00	105.00		8.40

System Requirements

PROCESSOR: Pentium III (32-bit)

RAM: 128 MB

STORAGE: 60-500 MB free disk space.

OPERATING SYSTEM: Windows® XP, Window Vista, Window 7 or Windows 8 operating systems with the latest service pack and hot fixes

DISPLAY: 1280 x 768 screen resolution (small font size)



Trimble MEP

7725 Jane Street
 Concord, ON, Canada, L4K 1X4
 800-361-3030
 800-361-3030
 meplearning@trimble.com

Trimble MEP
 116 Inverness Drive East
 Suite 210
 Englewood, CO 80112
 866-799-6673 (Toll Free)
 mepsupport@trimble.com

