

**THE HANGER BLOCK INSERTION TOOL ALLOWS YOU TO USE CUSTOM HANGER BLOCKS AND WILL QUICKLY PLACE THE BLOCKS AT HANGER POINT LOCATIONS ALONG THE PIPE RUN**

Trimble® PipeDesigner 3D® is the ultimate detailing tool for mechanical, piping and plumbing contractors. Trimble PipeDesigner 3D features the ability to auto-route for a single line, IFC export for project model coordination and field point export to the Trimble Field Link for MEP construction layout solution. Trimble PipeDesigner 3D is the single detailing solution for the mechanical contractor familiar with the AutoCAD platform.

### INTUITIVE & EFFICIENT

With Trimble PipeDesigner 3D's integration with AutoCAD, users are able to start working in the program without the typical steep learning curve. Also, the unique router line feature in Trimble PipeDesigner 3D gives the detailer the option of defining pipe routing paths. Through this tool, custom and standard slopes can be easily applied providing leading functionality for drawing sloped systems.

### DATA EDITING

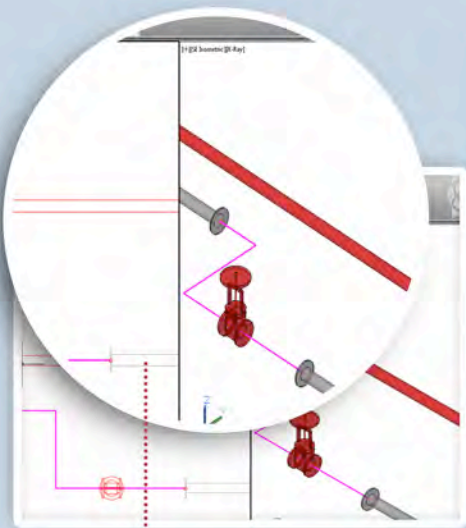
Featuring Data Editor, an easy to use tool for database management, used to manage fittings, build pipe specs, generate insulation schedules, setup layering standards and spool standards. With this tool, Trimble PipeDesigner 3D allows the CAD manager to quickly implement standards throughout the CAD department ensuring model consistency and accuracy.

### FIELD PREPARATION

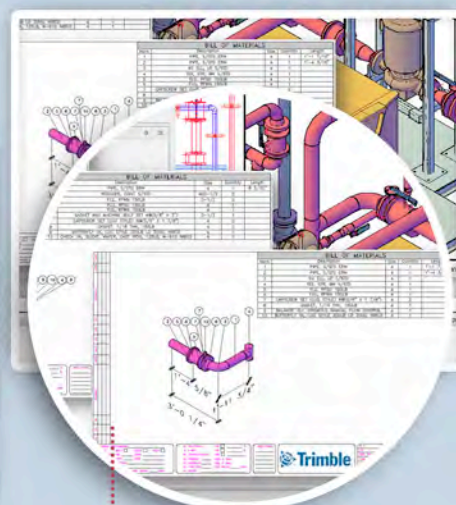
Great design shouldn't be lost in the field, Trimble PipeDesigner 3D allows the detailer to prep data for the field with Field Points ensuring the coordinated model is translated to the field. Users quickly automate points within their drawings for use with Trimble MEP or Trimble Field Link for MEP. This tool greatly increases layout time from CAD and reduces the need for paper construction documents in the field.

### INTEROPERABLE CONNECTIONS

Trimble PipeDesigner 3D follows the same workflow as used by the mechanical contractor, allowing for easy export for model coordination and post-bid cost reporting. With the ability to export design files via IFC, an open, neutral and standardized specification for BIM, contractors are able to work easily through the whole BIM model coordination process. Trimble PipeDesigner 3D also allows you to export your drawing to Trimble AutoBid® Mechanical to quickly gather post-bid reporting. By monitoring the project through the detailing phase, cost impacts due to changes in the design can be monitored closely.



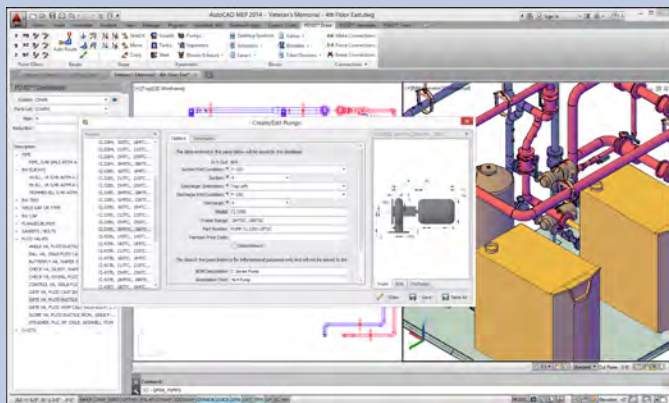
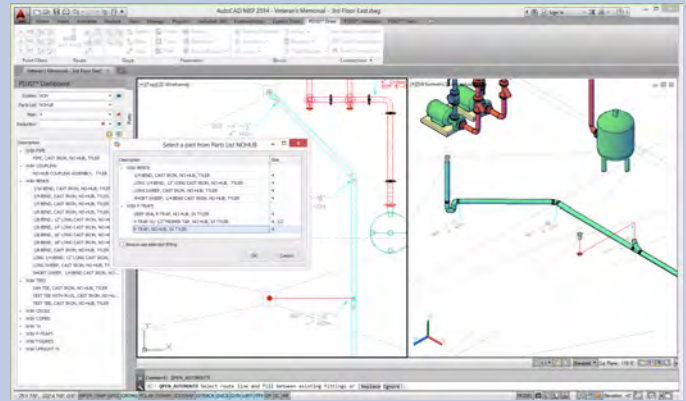
**THE AUTOMATIC FLANGES TOOL USES CONNECTION RULES AND SPEC DRIVEN SET UP ADD MANY OF THE COMPONENTS YOU NEED WITHOUT THE EXTRA STEPS**



**THE SPOOL MANAGER TOOL ALLOWS USERS TO EASILY DEFINE AND CREATE SPOOLS USING SPECIFIC NAMING SEQUENCERS, TEMPLATES AND BOM SETTINGS**

## Key Features

- **Hanger Block Insertion:** The Hanger Block Insertion tool allows you to use custom hanger blocks and will quickly place the blocks at hanger point locations along the pipe run.
- **Automatic Layering:** By managing the layer setup within the Data Editor, the fittings, welds, insulation, text, etc. are displayed onto the proper layer which minimizes the time managing such items and ensures company and project standardization within the modeling process.
- **Auto Routing:** Use the router line to create a single line route for horizontal, vertical or sloped systems. The AutoRoute program will fill the router line with your current spec combined with correct sizing to generate 3D pipe and fittings. Easily reroute to change pipe to a different spec or copy the route and fill each line with a different spec for rack piping systems.
- **Automatic Flanges:** Using connection rules and a spec driven setup, connecting to flanged components or cutting in flanged fittings to an existing run of pipe will also trigger flanges, welds and gaskets to be



## System Requirements

### WORKSTATION:

**PROCESSOR:** 2.8GHz Intel® Core™ i7 compatible processor with Hyper-Threading

**RAM:** 8GB RAM or higher

**STORAGE:** 5 GB free disk space for installation

**OPERATING SYSTEM:** Windows® 8 Professional 64-bit or Windows® 7 Professional 64-bit

**VIDEO CARD:** Autodesk® - certified graphics hardware

**MONITOR:** Dual 23-inch Monitors; 1280 X 1024 resolution



## Trimble MEP

10368 Westmoor Drive  
Westminster, CO, USA, 80021  
800-234-3758  
800-234-3758

meplearning@trimble.com

**Trimble MEP**  
116 Inverness Drive East  
Suite 210  
Englewood, CO 80116  
866-799-6673 (Toll Free)  
mepsupport@trimble.com



mep.trimble.com