

**USING OUR TRIMBLE DUCTDESIGNER 3D PROPERTIES PALETTE AND TOOLTIPS, QUICKLY VIEW THE PROPERTIES OF ANY FITTING**

Trimble® DuctDesigner 3D® is the perfect CAD detailing software for sheet metal and HVAC contractors looking to detail duct quickly in an easy-to-use drawing interface. The full-featured detailing solution works the way you work-- featuring the ability to set up your company standards for fabrication and project settings with the robust Data Editor. Highly extensible and integrated into your project workflow, Trimble DuctDesigner 3D integrates with Vulcan CAM software and Trimble Field Link for MEP layout solution.

### EASY-TO-USE

With Trimble DuctDesigner 3D's integration with AutoCAD, users are able to start working in the program without the typical steep learning curve. With the notification of invalid fittings option, users are notified if any fitting does not meet your duct construction standards. This option is specifically designed to warn users of invalid fittings such as transition offsets that exceed 30 degrees, elbows that exceed maximum bend allowances, taps that exceed maximum lengths.

### DATA EDITING

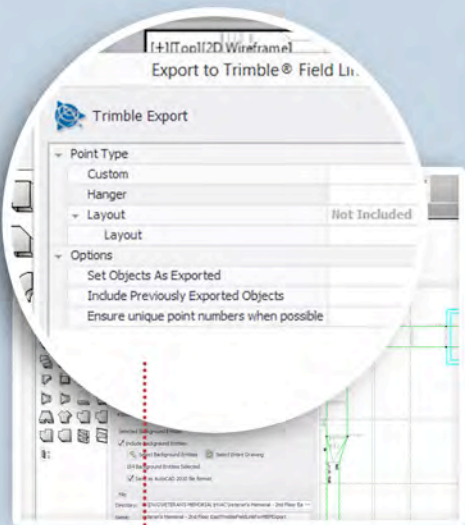
Featuring Data Editor, an easy to use tool for database management, used to manage fittings, build pipe specs, generate insulation schedules, setup layering standards and spool standards. This tool allows the CAD manager to quickly implement standards throughout the CAD department ensuring model consistency and accuracy.

### FIELD PREPARATION

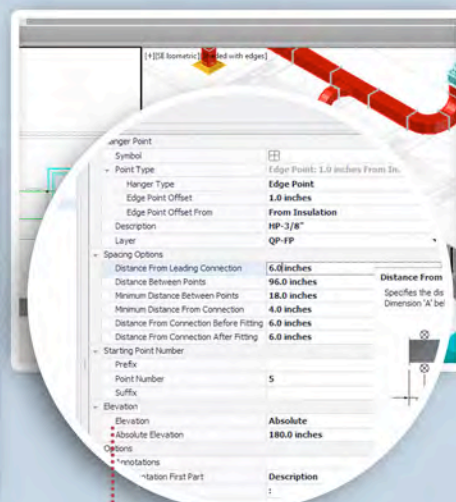
Great design shouldn't be lost in the field, Trimble DuctDesigner 3D allows the detailer to prep data for the field, including hanger anchor points, sleeves, etc., with Field Points ensuring the coordinated model is translated to the field. Users quickly automate points within their drawings for use with Trimble MEP or Trimble Field Link. This tool greatly increases layout time from CAD and reduces the need for paper construction documents in the field.

### INTEROPERABLE CONNECTIONS

Trimble DuctDesigner 3D allows for easy export for model coordination and post-bid cost reporting. With the ability to export design files via IFC, an open, neutral and standardized specification for BIM, contractors are able to work easily through the whole BIM model coordination process. DuctDesigner 3D also allows you to export your drawing to Trimble AutoBid® SheetMetal for quickly gathering post-bid reporting. By monitoring the project through the detailing phase, cost impact due to changes in the design can be monitored closely.



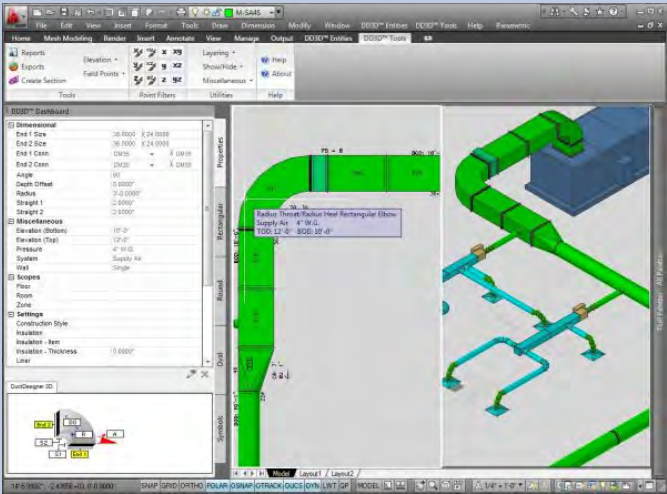
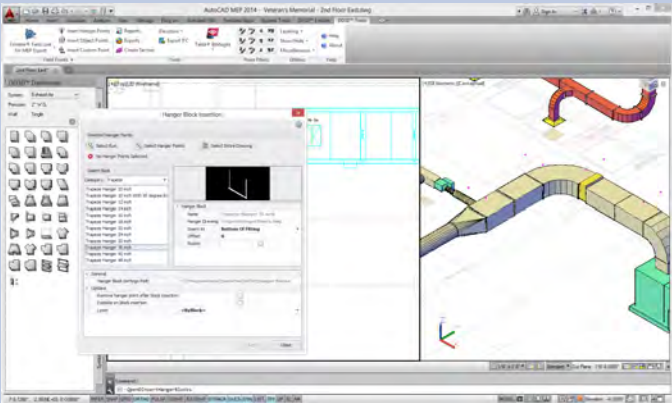
**AUTOMATICALLY EXPORT POINTS TO TRIMBLE FIELD LINK FOR MEP AND TRIMBLE MEP OR USE OUR CUSTOM POINTS TO MANUALLY PLACE POINTS THROUGHOUT THE DRAWING.**



**USE A VARIETY OF FIELD POINT COMMANDS TO AUTOMATE THE PLACEMENT OF LAYOUT POINTS WITHIN YOUR DRAWING; THESE POINTS CAN BE USED TO LOCATE EQUIPMENT, SLEEVES, HANGERS, CONTROL POINTS AND MORE WHEN EXPORTED TO TRIMBLE LAYOUT TOOLS**

### Key Features

- Auto Insert Hanger Blocks: The hanger block insertion tool allows you to use custom 3D hanger blocks and will quickly place the blocks at hanger point locations along the duct run.
- Auto Fill Tap: The program will automatically draw 3D fittings between the main duct run and your ceiling diffuser
- Company and Fabrication standard settings: Our Data Editor allows for the setup of company settings, fabrications, standards, and project settings
- Manual and automated field point tools: Use a variety of Field Point commands to automate the placement of layout points within your drawing. These points can be used to locate equipment, sleeves, hangers, control points and more when exported to the Trimble MEP and Trimble Field Link for MEP layout tools



### System Requirements

#### WORKSTATION:

PROCESSOR: 2.8GHz Intel® Core™ i7 compatible processor with Hyper-Threading

RAM: 8GB RAM or higher

STORAGE: 5 GB free disk space for installation

OPERATING SYSTEM: Windows® 8 Professional 64-bit or Windows® 7 Professional 64-bit

VIDEO CARD: Autodesk® - certified graphics hardware

MONITOR: Dual 21-inch Monitors; 1650 X 1050 resolution



### Trimble MEP

10368 Westmoor Drive  
Westminster, CO, USA, 80021  
800-234-3758  
800-234-3758

meplearning@trimble.com

Trimble MEP  
116 Inverness Drive East  
Suite 210  
Englewood, CO 80117  
866-799-6673 (Toll Free)  
mepsupport@trimble.com



mep.trimble.com