

Combining advanced technology and years of sheet metal experience, Trimble AutoBid® SheetMetal is the fastest, most accurate estimating software for sheet metal contractors. Using input tools such as GTCO digitizers and Smart Menus®, contractors can quickly and accurately create bids.

Increase Your Competitive Edge

Specification-driven takeoffs speed up the process by applying specs that automatically determine the properties of that item including the material type, metal gauge, and allowances of the items being taken off. Users need only worry about entering the item name and quantity and the associated specification provides the details.

Trimble AutoBid SheetMetal generates all fittings, including branch takeoffs, based on the relationship between points that are touched with either a digitizer or a mouse during the takeoff. By eliminating the need to place each fitting our product greatly reduces takeoff time.

OnScreen View of TakeOff

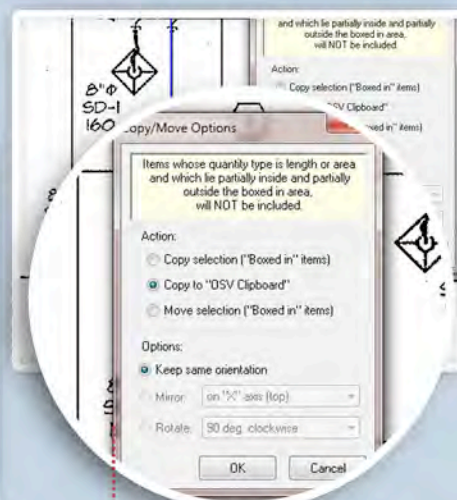
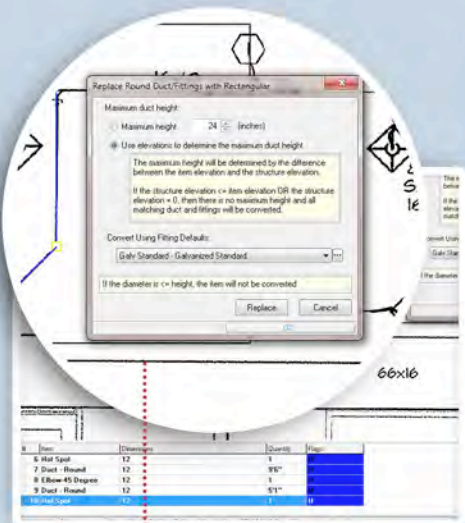
OnScreen View of TakeOff allows customers to skip the digitizer. Imported drawings are taken off on screen with the click of a mouse. While tracing takeoff, a corresponding visual audit trail is created. To further speed things up, areas of the onscreen drawing can also be boxed in and copied to repeat takeoff items such as a common VAV box hook-up or rooftop unit.

Change happens; Trimble AutoBid SheetMetal can highlight the differences between two similar drawings. By seeing the changes in the drawings, estimators can quickly determine where their takeoff needs to be changed.

Importing, Exporting & Reporting

Trimble AutoBid SheetMetal follows the workflow of the sheet metal contractor integrating with a variety of 3rd party applications. Whether contractors are looking to export to an accounting or scheduling program, generate your final bid summary, import jobs from your CAM software, export for fabrication information, or verify as-built conditions vs. engineer's drawings Trimble AutoBid SheetMetal's integration speeds the estimating and job costing process.

ONSCREEN VIEW OF TAKEOFF ALLOWS CUSTOMERS TO SKIP THE DIGITIZER. IMPORTED DRAWINGS ARE TAKEN OFF ON SCREEN WITH THE CLICK OF A MOUSE. WHILE TRACING TAKEOFF, A CORRESPONDING VISUAL AUDIT TRAIL IS CREATED.

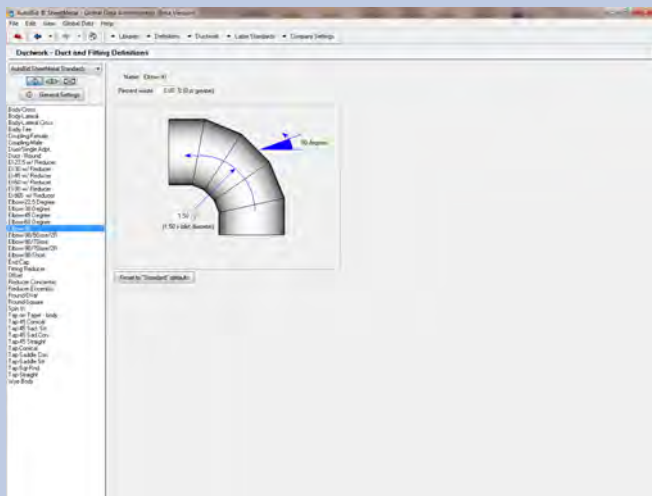
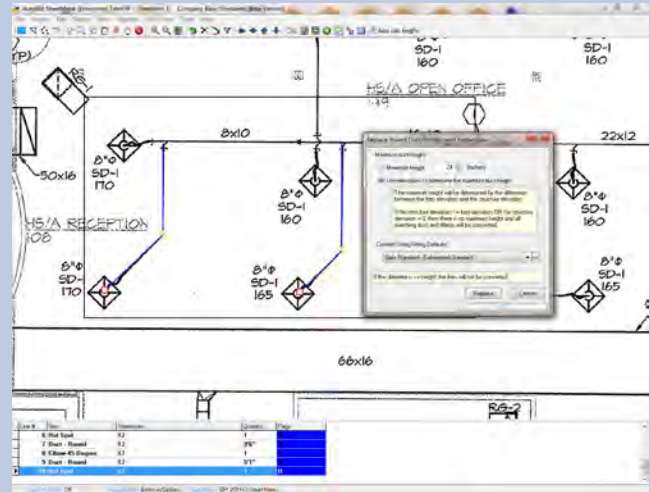


WITH TRIMBLE AUTOBID SHEETMETAL SHAPE CONVERSION TOOL CONTRACTORS CAN CONVERT RECTANGULAR DUCTS TO EQUIVALENT ROUND DUCT SIZES FOR ALTERNATE BIDS

CONTRACTORS CAN SPEED THEIR TAKEOFF EVEN MORE WITH THE COPY/MOVE OPTIONS TO EASILY REPEAT COMMON ITEMS

Key Features

- **Shape Conversion Tool:** Rectangular ducts can be converted to equivalent round duct sizes. Contractors save time and money by generating a new price for round ductwork without having to redline a drawing and repeat the takeoff.
- **Vulcan Cutting Software Integration:** With AutoBid's integration with Vulcan users can import jobs from Vulcan to price change orders or they can export fabrication information to the Vulcan Cutting Software.
- **Conceptual estimates:** AutoBid also lets contractors quickly generate conceptual estimates by using OnScreen View of TakeOff & assemblies, complete with equipment placed and hookups and mains sketched in.
- **Rapid Reports:** Excel®-based bid reports which allow users to summarize or report their data in a variety of configurations. Rapid Reports can also be used as a Final Bid Sheet – productivity rates, crew mix, and equipment quotes can all be easily entered. Easily customized to meet user reporting needs.



System Requirements

WORKSTATION:

PROCESSOR: 2.8GHz Intel Compatible Processor

RAM: 4GB RAM or higher

STORAGE: 20 GB free disk space

OPERATING SYSTEM: Windows® 7® Professional or Windows XP® Professional (Service Pack 3)

VIDEO CARD: Discrete graphics card with 512MB RAM or greater

DISPLAY: 1680 x 1050 resolution (or greater)

MONITOR: Dual 23-inch Monitors; 1280 X 1024 resolution



Trimble MEP

10368 Westmoor Drive
Westminster, CO, USA, 80021
800-234-3758
800-234-3758
meplearning@trimble.com

Trimble MEP
116 Inverness Drive East
Suite 210
Englewood, CO 80118
866-799-6673 (Toll Free)
mepsupport@trimble.com



mep.trimble.com