

Trimble® AutoBid® Mechanical is the market leading labor and material estimating software, ideal for commercial mechanical, piping, and plumbing contractors. Providing contractors with customized graphical take off tools, automatic fitting generation, and multiple industry standard labor books, contractors can quickly and accurately create bids.

Increase Your Competitive Edge

Specification driven take offs speed up the process by applying specs that automatically determine the properties of that item including the material type, schedule or wall thickness, and allowances of the items being taken off. Users need only worry about entering the item name and quantity and the associated specification provides the details.

AutoBid Mechanical generates all fittings, including branch takeoffs, based on the relationship between points that are touched with either a digitizer or a mouse during the takeoff. By eliminating the need to place each fitting, our product greatly reduces takeoff time.

On-Screen View of Take-Off

OnScreen View of takeoff allows customers to skip the digitizer; take-off is performed on screen with imported drawings with the click of a mouse. While tracing take off, a corresponding visual audit trail is created. To further speed things up, areas of the on screen drawing can also be boxed in and copied to repeat takeoff items or contractors can easily select a group to create an assembly for frequently used take off lists speeding up time.

Change happens; AutoBid Mechanical can highlight the differences between the bid set of drawings and the issued for construction drawings. By seeing the changes in red on the overlaid drawings, estimators can quickly determine the changes. Additionally, with the intelligent Graphical Take-Off and On-Screen View TakeOff, project managers can use the Box-In functionality to quickly select project areas to modify reports and generate detailed costs codes, schedules of values and purchase orders, without performing additional take-off. This box-in feature is great for short interval planning as well.

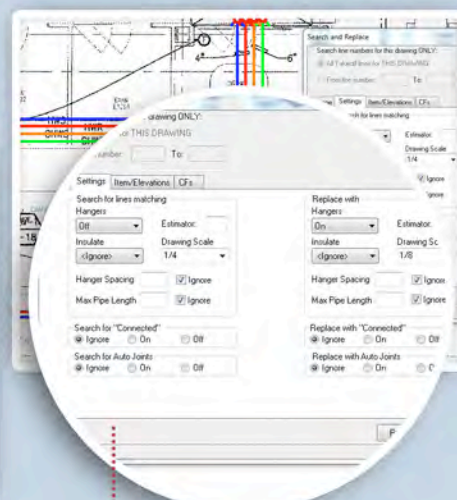
Importing, Exporting & Reporting

AutoBid Mechanical follows the workflow of the mechanical contractor integrating with a variety of 3rd party applications. Whether contractors need to export to an accounting package, scheduling software, final bid summary, export for fabrication, or verify as-built conditions vs. engineer's drawings AutoBid Mechanical's integration speeds the estimating and job costing process.

ONSCREEN VIEW OF TAKEOFF ALLOWS CUSTOMERS TO SKIP THE DIGITIZER; TAKE-OFF IS PERFORMED ON SCREEN WITH IMPORTED DRAWINGS WITH THE CLICK OF A MOUSE. WHILE TRACING TAKE OFF, A CORRESPONDING VISUAL AUDIT TRAIL IS CREATED.

| Category | Material | Labor | Total | % of Cost |
|--------------------|------------|------------|------------|-----------|
| Materials | \$ 223,043 | \$ 224,049 | \$ 447,092 | 25.6% |
| Equipment | \$ - | \$ 48,900 | \$ 48,900 | 4.5% |
| Subcontractors | \$ - | \$ 63,775 | \$ 63,775 | 5.9% |
| Overhead | \$ - | \$ 5,127 | \$ 5,127 | 0.6% |
| Quoted Items Total | \$ 223,043 | \$ 342,851 | \$ 565,894 | 25.6% |

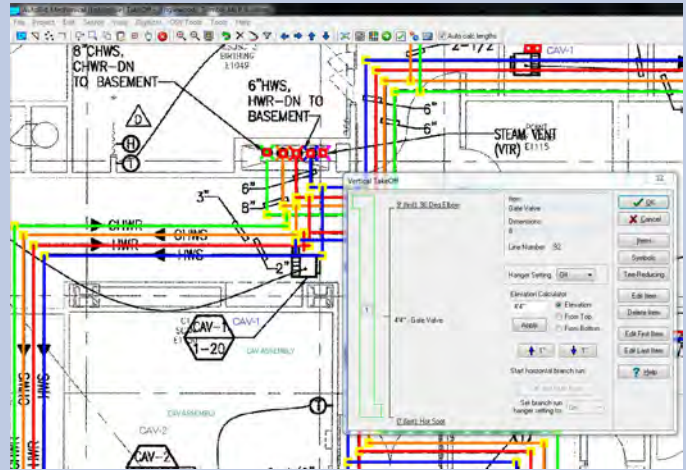
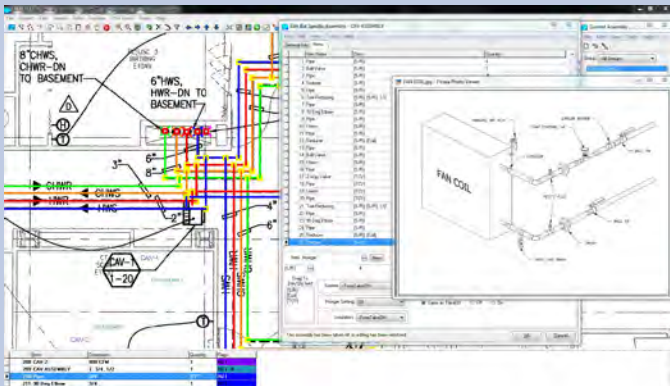
THE INNOVATIVE RAPID REPORTS PIVOT TABLE ALLOWS YOU TO VIEW YOUR ESTIMATE BY MORE THAN 10 CATEGORIES, ALLOWING FOR UP TO 1,320 DIFFERENT DATA COMBINATIONS.



WITH FLEXIBLE SEARCH & REPLACE FUNCTIONALITY, YOU CAN QUICKLY CHANGE EVERYTHING FROM ITEM SETTINGS TO SCALE TO MATERIAL TYPES ON AN ENTIRE DRAWING OR SELECT PIECES.

Key Features

- **Accurate Hanger and Attachment Count:** The application identifies which pieces of pipe and fittings are connected. This generates hangers at changes in directions and at user-defined spacing based on pipe size. Upper attachments based on the structure are also correctly chosen.
- **Conceptual estimates:** AutoBid Mechanical also enables contractors to quickly generate conceptual estimates by using OnScreen View of TakeOff & Assemblies. Including equipment locations, hookups and piping mains as they are sketched.
- **PipeDesigner 3D Integration:** The piping model can be exported from PipeDesigner 3D directly into AutoBid Mechanical. This powerful feature allows the estimator to assemble the associated material and labor costs without quantifying in take-off.
- **Pricing Services:** AutoBid Mechanical contains a live link to the most popular pricing services which enables the user to maintain current material pricing in their database. The following pricing services are available: Harrison Publishing House, Trade Service, allpri\$er.



System Requirements

WORKSTATION:

PROCESSOR: 2.8GHz Intel Compatible Processor

RAM: 4GB RAM or higher

STORAGE: 20 GB free disk space

OPERATING SYSTEM: Windows® 7® Professional or Windows XP® Professional (Service Pack 3)

VIDEO CARD: Discrete graphics card with 512MB RAM or greater

DISPLAY: 1680 x 1050 resolution (or greater)

MONITOR: Dual 23-inch Monitors; 1280 X 1024 resolution



Trimble MEP

10368 Westmoor Drive
Westminster, CO, USA, 80021
800-234-3758
800-234-3758
meplearning@trimble.com

Trimble MEP
116 Inverness Drive East
Suite 210
Englewood, CO 80113
866-799-6673 (Toll Free)
mepsupport@trimble.com



mep.trimble.com