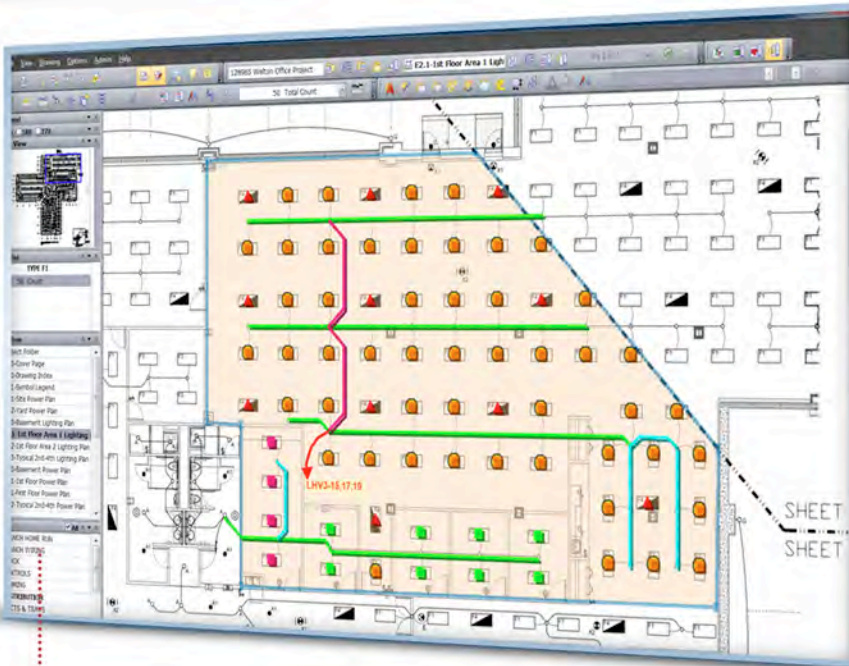


DATASHEET TRIMBLE ACCUBID LIVECOUNT AND LIVECOUNT PRO



TRIMBLE ACCUBID LIVECOUNT IS THE ULTIMATE GRAPHICAL TAKEOFF COMPANION TOOL TO YOUR TRIMBLE ACCUBID ESTIMATING SOLUTION

Not all owners and general contractors provide 2D or 3D native models to help develop an estimate. When this happens, be ready with the Trimble® Accubid LiveCount and LiveCount Pro.

LIVE BI-DIRECTIONAL LINK WITH TRIMBLE ACCUBID ESTIMATING

LiveCount is fully integrated with the Trimble Accubid Estimating solutions and features a two-way, live link between the drawing and the estimate. Takeoff edits can be initiated within LiveCount and automatically update the audit trail when quantities are changed. With no need to import, export, or manually enter quantities, the estimator is able to move quickly within the project.

ROBUST DRAWING IMPORT AND MANAGEMENT

With LiveCount's ability to handle large sets of drawings and poorly named files, contractors can significantly speed up project creation. Users can easily review, rotate and rename complex sets of drawings. Different versions of the same image can also be compared, allowing users to easily identify changes.

LiveCount measures takeoffs across multiple drawings which means users can see the quantity displays both by page and overall totals. With incredibly fast redraw time, easy-to-use pan and zoom features and close-up windows to help with the big picture and small details.

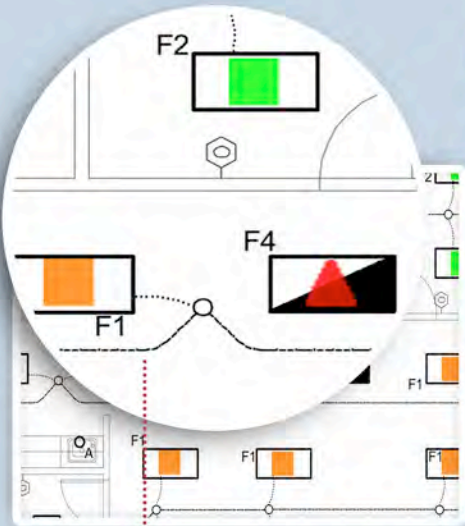
LINK/UNLINK & COMBINATION GRAB

Both length and count can be retrieved in a single pass, cutting takeoff time in half. Either count, length or both variables can be unlinked from LiveCount providing contractors greater control by allowing manual overrides. Users can also trace non-scaled takeoffs including isometric drawings and one-line diagrams and manually enter the length while marking the run as quantified on-screen.

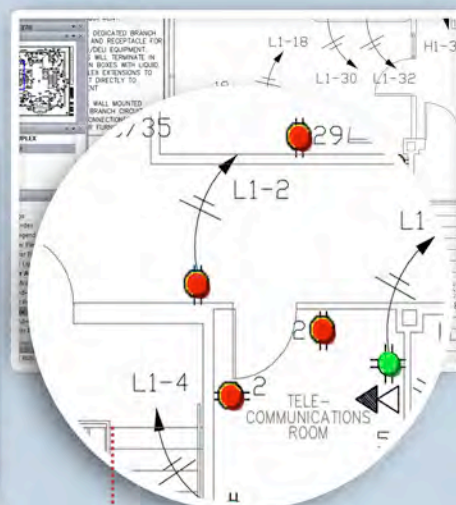
UNIQUE AUTO COUNT

Contractors save time by letting LiveCount Pro do the tedious counting task using the Auto Count feature. This powerful and accurate symbol recognition functionality uniquely displays search results; allowing for easy identification of drawing objects.

With Auto Count Refine, users can further refine and save search results, while continuing to refine remaining objects. LiveCount Pro also detects identifiers that are not only in, but also around similar symbols, allowing users to make distinctions previously done manually or with a CAD program.



AUTO COUNT WITH ACCURATE RESULTS; EVEN WHEN SYMBOL IDENTIFIER IS IN A DIFFERENT POSITION, WHILE MARKING THE CENTER OF THE SYMBOL

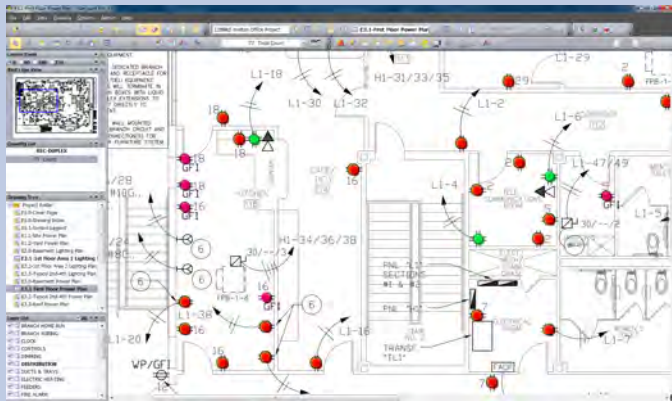


SAVE TIME BY LETTING TRIMBLE ACCUBID LIVECOUNT PRO DO THE TEDIOUS COUNTING TASK USING THE AUTO COUNT FEATURE

TRIMBLE ACCUBID LIVECOUNT AND LIVECOUNT PRO

Key Features

- Sophisticated file management and drawing legends also allow users to coordinate and organize projects on the fly.
- Advanced image processing allows users to rotate and scale the addendum or revision drawing and control what level of grayscale should be converted to black when converting PDF's to TIF
- Subscribers to online plan rooms can also connect directly from LiveCount to the projects on their preferred plan room.
- Stop downloading new drawings every time they change - users can refresh their project files as the plan room updates occur, making the most recent bid drawings a click away.
- Save as from the estimate and create a parallel project in LiveCount Pro, allowing alternates to be quantified while preserving the original bid.
- Senior estimators can leverage their time by leaving the counting to the junior estimators.
- Batch print images directly from LiveCount, while continuing to work in the application.



Feature	LiveCount Pro	LiveCount
Auto Count with refine and identifier search	•	
Utility for importing and renaming drawings	•	
Online plan room integration	•	•
Retrieve both length and count simultaneously	•	•
Break link between quantity and component	•	•
Support project "save as"	•	•
Auto update bid upon change of drawing scale	•	•

System Requirements

PROCESSOR: 2.0GHz Pentium 4 or greater

RAM: 2GB RAM minimum (4GB RAM or more recommended)*

STORAGE: 80 GB disk space minimum (200 GB recommended) for data and drawing files**

OPERATING SYSTEM: Windows 7 64-bit or Windows 8 64-bit

VIDEO CARD: Discrete graphics card with 512MB RAM or greater

DISPLAY: 1680 x 1050 resolution (or greater)

MONITOR: 21 inch or great (dual monitors recommended)

MOUSE: Laser mouse with wheel



Trimble MEP

116 Inverness Drive East
Englewood, CO, United States, 80112
800-234-3758

meplearning@trimble.com

Trimble MEP
116 Inverness Drive East
Suite 210
Englewood, CO 80112
866-799-6673 (Toll Free)
mepsupport@trimble.com



mep.trimble.com